



*Innovation, Quality and Service*  
*We care for care*

[www.pegasuszorg.com](http://www.pegasuszorg.com)



## Your partner for rehabilitation and healthcare products

### **Our mission**

To exceed the expectations of our customers, by means of:

- Thinking alongside with our customers
- Quick and short communication lines
- Development of new products
- Improving existing products
- Respectable aftersales and guarantee terms

This ensures that Pegasus Zorg stands for innovation, quality and service.  
Which makes us an expert in our business field.

### **Our history**

In 2001 we started the production of wheelchair frames, specifically for orthosis seating systems.

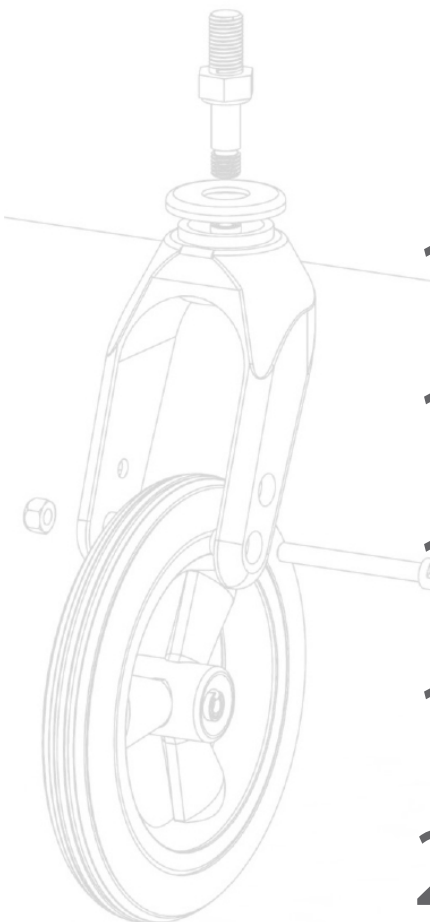
Since then, we have made great progress in the development of our wheelchairs. We have expanded our product range in 2005 with our own production of wheelchair wheels.

In 2007 the production of our standard wheelchair parts started and this has led to the point that since 2009 we are able to create customized products on request, from concept to creation.

Thanks to our global production facilities and faithful customers, Pegasus Zorg has become a solid factor in the production and providence of healthcare products with customers all over the world.

The majority of our products are self-produced or directly bought from the manufacturer.

This allows us to offer a wide and competitive product range.



6	<b>Wheelchair frames</b> Adult, children and indoor wheelchairs
16	<b>Seatings</b> Seatings
17	<b>Backrests</b> Backrests
18	<b>Padding parts</b> Side pad, knee pad and abduction cushion
19	<b>Foam rubber</b> Polyether and finishing profile
20	<b>Headrests</b> Headrests, adjustment systems, guiders and mounting parts
28	<b>Therapy tables</b> Therapy tables, adjustment systems and guiders
33	<b>Armrests</b> Armrests, armpads and spare parts
39	<b>Legrests</b> Legrests, footrests and calfsupports
45	<b>Brakes</b> Handbrakes, brake levers, brake cables and spare-parts
53	<b>Wheels</b> Wheels with pneumatic tyre, PU tyre, rubber tyre and swivel wheels
62	<b>Tyres</b> Tubes, tyres and PU tyres
67	<b>Plastic forks</b> Plastic forks

68	<b>Rims</b> Rims
70	<b>Wheel attachments</b> Distance bushing, pushrim cover, spoke guards and bearings
76	<b>Handgrips</b> Handgrips
78	<b>Gas springs</b> Gas springs, controlling units and spare parts
82	<b>Adjustment parts</b> Fixation parts, 90 degree profile, abduction holders
89	<b>Fixation parts</b> Index bolts, tube clamps, saddle clamps, knobs and hinges
98	<b>Welding nuts</b> Welding nuts, corner welding nuts, welding plate and drive-in nut
100	<b>Accessories</b> Safety belts, walking sticks, caps, oxygen- cane- rollator holders
107	<b>Accessories wheelchair</b> Seating cushions, leg bags and anti tippers
108	<b>Accessories rollator</b> Umbrellas, back supports and covers
109	<b>Accessories scooter</b> Covers, bags, ponchos and ramps
111	<b>Search Index</b> Keywords in alphabetical order

# Introduction of our catalogue

Dear Customer,

Proudly we present you our newest catalogue.

With this catalogue we would like to give you an impression of our company and products.

This catalogue shows only a selection of our product range.

Apart from this selection, we produce a large number of products, specially developed on request from customers.

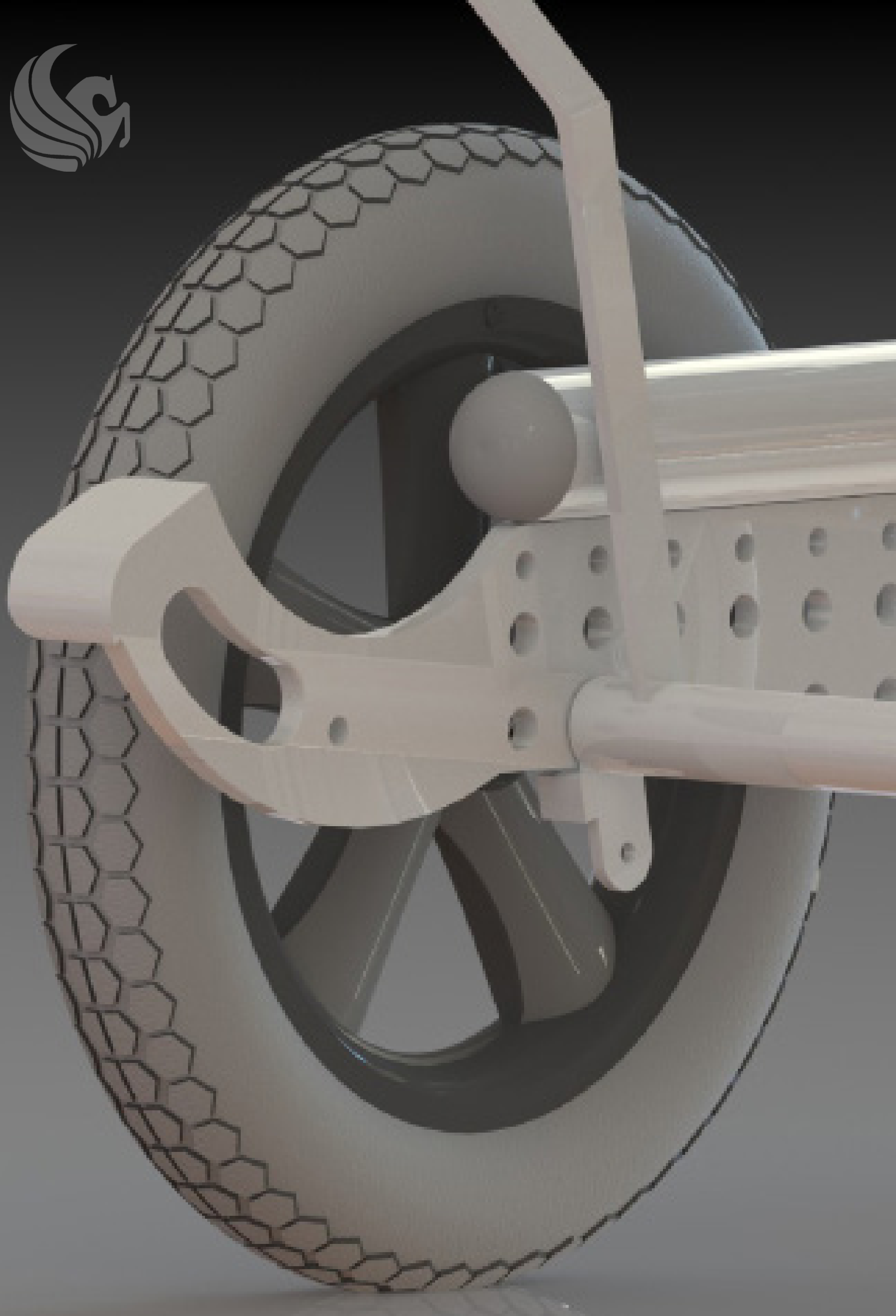
We invite you to visit our website [www.pegasuszorg.com](http://www.pegasuszorg.com) for more information about our company.

On our website, this catalogue can also be viewed and downloaded.

Best Regards,

The Pegasus Zorg team





WHEELCHAIR | VARIA



- Including armrests
- TUV/Berlin Cert tested on **EN12183, EN12182**, TUV tested on **ISO 7176-19** (crash test)
- Suitable for almost every situation thanks to the many customization options
- 10 seating height positions

DESCRIPTION	COLOUR	ARTICLE NO.
Varia wheelchair-base	White pearl	82011
Varia wheelchair-base	Silver metallic	82013

VARIA | SPECIFICATIONS



The Varia is a quality product made for comfort and safety.

The Varia is our newest wheelchair frame and designed with an uncompromising approach to the performance, to improve the comfort and easy to use.

This has resulted in a technical smart and modular design, with many adjusting possibilities.

**Options and Accessories**

For the Varia there are many options and accessories available. On the next page a part of these options will be shown.

In case you need spare parts or accessories, which you cannot find in our catalogue, please contact us so we can look for possibilities.

THE VARIA, A NATURAL CHOICE

Specifications

DESCRIPTION	QUANTITY	UNIT
Max. user weight	120	kg
Seating width	54 - 62	cm
Seating depth	45.50	cm
Seating height	42 - 62	cm
Back height	51	cm
Total width	45	cm
Total length	62	cm
Total weight	33	kg
Front wheels	8 inch	solid
Rear wheels	12 Inch	pneumatic

## VARIA | OPTIONS



### OPTIONS FOR THE VARIA

DESCRIPTION	TYPE	ARTICLE NO.
Gas spring backrest	a pcs	820021
Solid rear wheels	per set	820112
Legrests standard	per set	8708
Legrests comfort	per set	8370
Safety belt	150cm	6302
Armrests	per set	820020
Pneumatic tyres front	per set	820022
24 inch rear wheels	per set	820114



## VARIA | ACCESSORIES



### ACCESSORIES FOR THE VARIA

In the table below you can see what accessories are suitable for this wheelchair.  
In the PDF version of this catalogue, clicking on any category will link you directly to the right page.

CATEGORY	TYPE	ARTICLE NO.
Headrests	15x15mm	Whole assortment
Legrests	n.a.	Whole assortment
Therapy tables	19mm	All versions in 19mm
Handgrips	n.a.	Whole assortment



WHEELCHAIR | DEGO II



- Including armrests
- TUV/TNO tested on **EN12183 / EN12182**
- Delivered as shown on the image on the left

DESCRIPTION	COLOUR	ARTICLE NO.
Dego II wheelchair	Blue metallic	82001
Dego II wheelchair	Black metallic	82003
Dego II wheelchair	Silver metallic	82004

DEGO II | SPECIFICATIONS



The DeGo II is a comfortable wheelchair frame, unique in it's kind due to the adjustment possibilities.  
The DeGo II is well known by it's lightweight and adaptable driving

- The seating is adjustable in depth and angle
- Armrest are adjustable in height, width and angle
- Height adjustable push bars
- 4 point fixation for transport

TILT-IN-SPACE REACH OF 36 DEGREES!

Specifications

DESCRIPTION	QUANTITY	UNIT
Max. user weight	100	kg
Seating width	40 - 50	cm
Seating depth	50	cm
Seating height	47 - 52	cm
Back height	51	cm
Total width	61	cm
Total length	76	cm
Total weight	23	kg
Front wheels	8 inch	solid
Rear wheels	12 Inch	pneumatic

**Options and Accessories**  
For the DeGo II there are many options and accessories available. On the next page a selection will be shown. In case you need spare parts or accessories which you cannot find in our catalogue, please contact us so we can look for possibilities.

## DEGO II | OPTIONS



## OPTIONS FOR THE DEGO II

DESCRIPTION	TYPE	ARTICLE NO.
Gas spring backrest	a pcs	820021
Solid rear wheels	per set	820014
Anti-tipping wheels (adjustable)	a pcs	820011
24 inch rear wheels	per set	82005
Drum brakes	per set	820051
Legrests standard	per set	8708
Legrests comfort	per set	8370
Safety belt	150cm	6302
Armrests	per set	820020
Seating lowering kit	per set	8203
Pneumatic front wheels	per set	820022

## DEGO II | ACCESSORIES



## ACCESSORIES FOR THE DEGO II

In the table below you can see what accessories are suitable for this wheelchair frame. In the PDF version of this catalogue, clicking on any category will link you directly to the right page.

CATEGORY	TYPE	ARTICLE NO.
Headrests	15x15mm	Whole assortment
Legrests	n.a.	Whole assortment
Therapy tables	19mm	All versions in 19mm
Handgrips	n.a.	Whole assortment



## WHEELCHAIR | SPIDER



- Detachable top frame and foldable base frame
- Completely renewed design
- Tilt in space function, operable with gas spring

DESCRIPTION	COLOUR	ARTICLE NO.
Spider wheelchair	Silver metallic	8500-G
Spider wheelchair	Blue metallic	8500-B

## SPIDER | SPECIFICATIONS



### FOLDABLE CHILDREN WHEELCHAIR

- Compact and sustainable wheelchair for children
- Suitable for many seating, positioning or modular systems
- Easy to adjust to individual needs.

### Flexible and stable

The Spider is provided with front- and rear wheels made from Polyurethane (PU) these tyres are puncture proof.

User convenience was upmost important in the designing of the Spider. As a result, the frame can be disassembled and folded without the use of tools.

### Options and Accessories

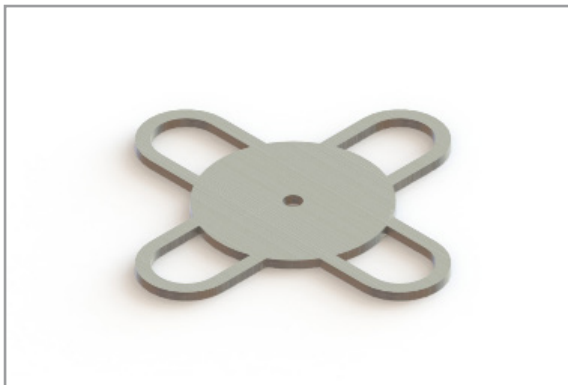
See the next page for the available options and accessories for this wheelchair.

### Specifications

DESCRIPTION	QUANTITY	UNIT
Max. user weight	60	kg
Seating width	31 - 45	cm
Seating depth	25 - 35	cm
Seating height	45	cm
Back height	40	cm
Total width	60	cm
Total length	60	cm
Total weight	16	kg
Front wheels	8 inch	solid
Rear wheels	12 Inch	solid

The Spider is compact for transport by disassembling the top- and lower frame. The lower frame can be folded and transported separately.

## SPIDER | OPTIONS



### OPTIONS FOR THE SPIDER

- The option 'Transport fixation' (see image on the left) can be easily attached to the frame
- Provided with a headrest reception tube for positioning a headrest

DESCRIPTION	TYPE	ARTICLE NO.
Legrests standard	per set	85002
4 point transport fixation	a pcs	85005
Armrests	per set	85001
Safety belt	150cm	6302
Pneumatic front tyres	per set	820022

## SPIDER | ACCESSORIES



### ACCESSORIES FOR THE SPIDER

In the table below you can see what accessories are suitable for this wheelchair. In the PDF version of this catalogue, clicking on any category will link you directly to the right page.

CATEGORY	TYPE	ARTICLE NO.
Headrests	15x15mm	Whole assortment
Legrests	20x20mm	6931 and 85002
Therapy tables	19mm	All versions in 19mm
Handgrips	n.a.	Whole assortment





## WHEELCHAIR | NIVARA LIFTY



- 4 point fixation for transport
- High-low function
- Adjustable anti-tipping
- Including armrests

DESCRIPTION	COLOUR	ARTICLE NO.
Wheelchair Nivara Lifty	Blue metallic	8000

## NIVARA LIFTY | SPECIFICATIONS



### HIGH LOW FUNCTION

The Nivara Lifty is provided with a high-low function, allowing the occupant to play on the ground and slide to the dining table in the same chassis. The Nivara Lifty has 2 gas springs that operate the high-low function. Optional there is an electrical version available.

### Options and Accessories

See the next page for the available options and accessories for this wheelchair.

In case you need spare parts or accessories which you cannot find in our catalogue, please contact us so we can look for possibilities.

### Specifications

DESCRIPTION	QUANTITY	UNIT
Max. user weight	60	kg
Seating width	31 - 45	cm
Seating depth	47	cm
Seating height	25 - 54	cm
Back height	51	cm
Total width	65	cm
Total length	71	cm
Total weight	33	kg
Front wheels	8 inch	solid
Rear wheels	12 Inch	solid

Unique thanks to it's high-low function and stepless adjustable tilt system.

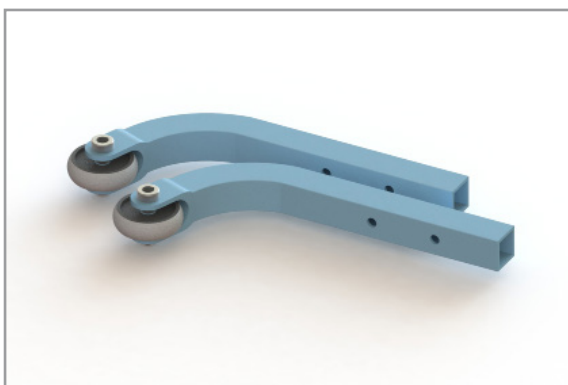


## NIVARA LIFTY | OPTIONS



### OPTIONS FOR THE NIVARA LIFTY

- The actuator (see top image) is including battery and remote control
- Anti-tipping (see bottom image) are included



DESCRIPTION	TYPE	ARTICLE NO.
Gas spring backrest	standard	820021
Drum brakes	per set	800051
Legrests standard	per set	85002
Anti-tipping	per set	8534
Armrests	per set	85001
Safety belt	150cm	6302
Pneumatic front tyres	per set	820022

## NIVARA LIFTY | ACCESSORIES



### ACCESSORIES FOR THE NIVARA LIFTY

In the table below you can see what accessories are suitable for this wheelchair.  
In the PDF version of this catalogue, clicking on any category will link you directly to the right page.

CATEGORY	TYPE	ARTICLE NO.
Headrests	15x15mm	Whole assortment
Legrests	20x20mm	6931 and 85002
Therapy tables	19mm	All versions in 19mm
Handgrips	n.a.	Whole assortment

## WHEELCHAIR INDOOR | SAMSARA



- Designed for children
- 360 degree swivel wheels for maximum manoeuvrability
- Simple to adjust in height and angle

DESCRIPTION	ANGLE ADJ.	VERSION	COLOUR	ARTICLE NO.
Samsara indoor	Manual	Medium	Blue metallic	6020
Samsara indoor	Gas spring	Medium	Blue metallic	6022

## SAMSARA | SPECIFICATIONS



## MAXIMUM MANOEUVRABILITY INDOORS

The Samsara is the ideal combination of comfort and manoeuvrability indoors.

## Simple adjustability

- Height and angle positions can be individually configured with knobs
- On the frame, there is a preparation for a detachable cassette.

## Options and Accessories

The following options are available for the Samsara:

- 85001 - Armrests (complete set)
- 60223 - Legrests (complete set)

## Specifications

DESCRIPTION	QUANTITY	UNIT
Max. user weight	60	kg
Seating width	n.a.	cm
Seating depth	n.a.	cm
Seating height	36 - 51	cm
Total width	37	cm (small)
Total width	49	cm (medium)
Total length	61	cm
Total weight	8	kg
Front wheels	75	cm
Rear wheels	75	mm (with brake)

Extremely viable and the seating height is easily changeable.

## WHEELCHAIR INDOOR | WATER RESISTANT

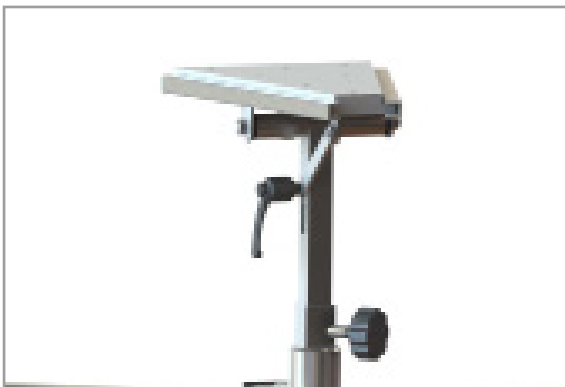


### WATER RESISTANT CHAIR

This wheelchair is specially designed for indoor usage. By using stainless steel material, it can also be used as a shower chair.

- High quality stainless steel frame
- All 5 wheels are swivel and fitted with a brake
- Detachable cassette to fix the seating system

DESCRIPTION	COLOUR	ARTICLE NO.
Water resistant indoor chair	Polished SS	6200



## WHEELCHAIR INDOOR | SPECIFICATIONS



### Operating the adjustments

- The cassette (no. 10) is detachable with an index bolt (no. 14) and is provided with multiple fixation points.
- Height adjustable with a knob (no. 6)
- The angle adjustment (no. 4) can be operated with a knob on the top frame (no. 9)

### Specifications

DESCRIPTION	QUANTITY	UNIT
Max. user weight	60	kg
Seating width	n.a.	cm
Seating depth	n.a.	cm
Seating height	43 - 53	cm
Total width	65	cm
Total length	65	cm
Total weight	6	kg
Wheels	75	mm (with brake)



## SEATING| STANDARD



- These seatings are provided with a black Pro Skin cover
- The standard seat is suitable for the active wheelchair user with a low risk developing pressure ulcers (decubitus ulcers) and freedom of movement

DESCRIPTION	DEPTH	WIDTH	HEIGHT	ARTICLE NO.
Standard seat	48cm	40cm	7cm	41132
Standard seat	48cm	46cm	7cm	41133
Standard seat	48cm	50cm	7cm	41134
Standard seat	55cm	46cm	7cm	41135
Standard seat	55cm	50cm	7cm	41136
Standard seat	55cm	54cm	7cm	41137

## SEATING| WEBBED



- These seatings are provided with a black Pro Skin cover
- The webbed seat is suitable for the active wheelchair user with a slight risk developing pressure ulcers (decubitus ulcers) and freedom of movement

DESCRIPTION	DEPTH	WIDTH	HEIGHT	ARTICLE NO.
Webbed seat	48cm	40cm	7cm	41138
Webbed seat	48cm	46cm	7cm	41139
Webbed seat	48cm	50cm	7cm	41140
Webbed seat	55cm	46cm	7cm	41141
Webbed seat	55cm	50cm	7cm	41142
Webbed seat	55cm	54cm	7cm	41143

## SEATING| COMFORT



- These seatings are provided with a black Pro Skin cover
- The comfort seat is suitable for the wheelchair user with a high risk of developing pressure ulcers (decubitus ulcers). Thanks to its anatomical design, this seat provides good pressure distribution and stability and prevents the wheelchair user from sliding forward.

DESCRIPTION	DEPTH	WIDTH	HEIGHT	ARTICLE NO.
Comfort seating	48cm	40cm	9cm	41144
Comfort seating	48cm	46cm	9cm	41145
Comfort seating	48cm	50cm	9cm	41146
Comfort seating	55cm	46cm	9cm	41147
Comfort seating	55cm	50cm	9cm	41148
Comfort seating	55cm	54cm	9cm	41149

## BACKREST | STANDARD



- These back supports are provided with a black Pro Skin cover
- The standard backrest is suitable for the active wheelchair user and ensures a lot of freedom of movement

DESCRIPTION	HEIGHT	WIDTH	ARTICLE NO.
Standard backrest	50cm	40cm	41150
Standard backrest	50cm	46cm	41151
Standard backrest	50cm	50cm	41152
Standard backrest	57cm	46cm	41153
Standard backrest	57cm	50cm	41154
Standard backrest	57cm	54cm	41155

## BACKREST | ACTIVE



- These back supports are provided with a black Pro Skin cover
- The active backrest is suitable for the active wheelchair user and ensures a lot of freedom of movement and a correct seating position by its low shaped lateral support

DESCRIPTION	HEIGHT	WIDTH	ARTICLE NO.
Active backrest	50cm	40cm	41156
Active backrest	50cm	46cm	41157
Active backrest	50cm	50cm	41158
Active backrest	57cm	46cm	41159
Active backrest	57cm	50cm	41160
Active backrest	57cm	54cm	41161

## BACKREST | PASSIVE



- These back supports are provided with a black Pro Skin cover
- The passive backrest is suitable for the passive wheelchair user and ensures a stable seating position by its shaped lateral support

DESCRIPTION	HEIGHT	WIDTH	ARTICLE NO.
Passive backrest	50cm	40cm	41162
Passive backrest	50cm	46cm	41163
Passive backrest	50cm	50cm	41164
Passive backrest	57cm	46cm	41165
Passive backrest	57cm	50cm	41166
Passive backrest	57cm	54cm	41167



## SIDE PAD | STANDARD



- The standard side pads are suitable for both the active and the passive wheelchair user and ensures a correct seating position.
- Gives the the wheelchair user a stabilizing position, when the pad is lined up with the pelvis
- Black Pro Skin cover

DESCRIPTION	DIMENSIONS	ARTICLE NO.
Standard side pad (per set)	36x13x3cm	4200

## KNEE PAD | STANDARD



- The standard knee pads can be mounted on the inside of the legrests
- Provided with a black Pro Skin cover

DESCRIPTION	DIMENSIONS	FIXATION	ARTICLE NO.
Knee pad (a pcs)	10x10x3cm	1x M6	42001
Knee pad (a pcs)	10x10x3cm	1x M8	42002

## ABDUCTOR | FLIP DOWN



- The flip down abductor is suitable for both the active and passive wheelchair user and ensures a correct seating position
- It's design and comfortable type of foam prevents the wheelchair user from slumping and therewith provides a stabilizing and remedial effect
- Provided with a black Pro Skin cover

DESCRIPTION	DIMENSIONS	ARTICLE NO.
Abductor only	8x8x10cm	4200
Abductor flip down system	n.a.	8536

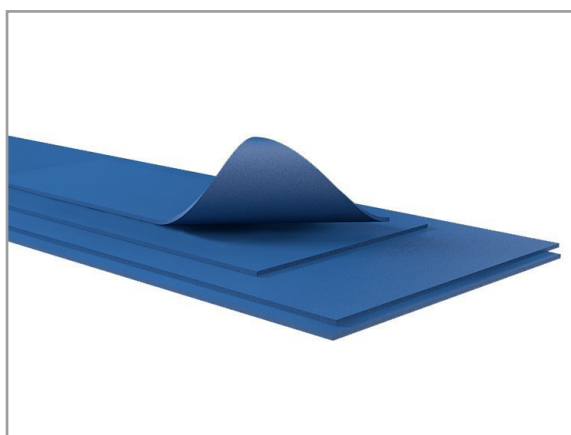
## POLYETHER | PUR ESTHER



- Foam rubber/polyether sheets for the finish of orthese/seating systems
- Colour: Natural (white)
- Dimensions: 200x150cm per sheet

DESCRIPTION	SHEET THICKNESS	ARTICLE NO.
Polyether pur ester (per sheet)	8mm	8257
Polyether pur ester (per sheet)	10mm	8258

## POLYETHER | EV-50



- Foam rubber/polyether sheets for the finish of orthese/seating systems
- Colour: Blue
- Dimensions: 200x100cm per sheet

DESCRIPTION	SHEET THICKNESS	ARTICLE NO.
Polyether EV-50	3mm	7020

## UPHOLSTERY | FINISHING PROFILE



- Made from extremely flexible rubber
- To cover the edges of the seating systems, therapy tables, armrests and backrests
- There is a MOQ of 1000 meter for the colours grey and blue

DESCRIPTION	LENGTH	COLOUR	ARTICLE NO.
Upholstery	100 meter	Black	8343-Z
Upholstery	100 meter	Grey	8343-G
Upholstery	100 meter	Blue	8343-B





HEADREST | WITH COVER



- Provided with a black Pro Skin cover
- Integrated mounting plate
- Headrest adjustment system 8323 is designed for below headrests

DESCRIPTION	DIMENSIONS	ARTICLE NO.
Headrest standard	260x130mm	4110
Headrest medium	350x120mm	4111
Headrest large	400x120mm	4112
Off centre adaptor	34mm	41181



HEADREST | WITHOUT COVER



- Integrated mounting plate
- Headrest adjustment system 8323 is designed for below headrests

DESCRIPTION	DIMENSIONS	ARTICLE NO.
Headrest standard	260x130mm	41100
Headrest medium	350x120mm	41111
Headrest large	400x120mm	41122
Off centre adaptor	34mm	41181



ADAPTOR | OFF CENTRE



- Placed between the headrest and adjusting system
- Can be applied left and right
- The headrest is placed 34mm off centre with this adaptor

DESCRIPTION	DIMENSIONS	ARTICLE NO.
Off centre adaptor	83x49x3mm	41181



## HEADREST HOLDER | ADJUSTING SYSTEM



- Stepless adjusting
- Suitable for all headrests on page 20
- 6mm fixation points (4 pcs)
- 35x35mm fixation point distance

DESCRIPTION	ARTICLE NO.
Headrest adjusting system	8323
Plastic mounting part with 4 holes	8300

## HEADREST HOLDER | ADJUSTING SYSTEM



- Stepless adjusting
- The mounting part can also be ordered separately
- 6mm fixation points (2 pcs)
- 35mm fixation point distance

DESCRIPTION	ARTICLE NO.
Headrest adjusting system	83231
Mounting part with 2 holes	83001

## HEADREST HOLDER | ADJUSTING SYSTEM



- Stepless adjusting
- Suitable for all headrests on page 20

DESCRIPTION	ARTICLE NO.
Headrest adjusting system	8323_1
Mounting part with 2 holes (a pcs)	97151



## HEADREST HOLDER | 5 HINGES



- Stepless adjusting
- Wide adjustment range because of the 5 hinges
- 6mm fixation points (2pcs)
- 35mm fixation point distance

DESCRIPTION	ARTICLE NO.
Headrest adjusting system	83232
Mounting part 2 point	83001

## HEADREST HOLDER | 4 HINGES



- Stepless adjusting
- The mounting part can also be ordered separately
- 6mm fixation points (2pcs)
- 35mm fixation point distance

DESCRIPTION	ARTICLE NO.
Headrest adjusting system	83233
Mounting part 2 point	83001

## HEADREST HOLDER | 90 DEGREES



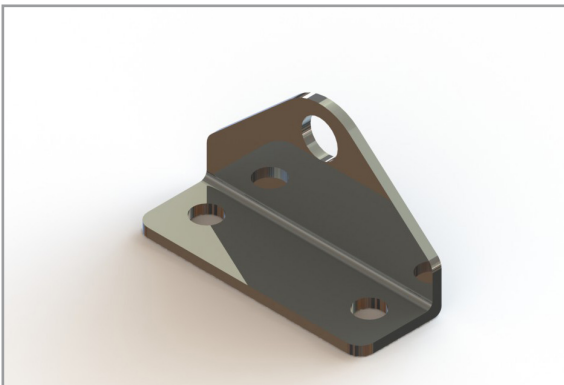
- Adjustable in depth
- Suitable for all headrests on page 20

DESCRIPTION	ARTICLE NO.
Headrest adjusting system	9806
Height adjusting sub-part 340mm	9806_1
Depth adjusting sub-part 190mm	9806_2
Mounting part 2 point fixation (a pcs)	97151
Starknob M8x20	83381

## HEADREST HOLDER | TYPE 304



- Stepless configuring without the use of tools
- Elegant design
- Chrome finish
- Including knob
- 8327 ( top image on the left)



DESCRIPTION	TYPE	ARTICLE NO.
Headrest adjusting system	Knob in outside	8327
Headrest adjusting system	Knob on inside	83274
Mounting part 2 fixation points	Chrome	9715

## HEADREST COMPLETE | FOLDABLE



- Can be attached to foldable wheelchairs because of its unique folding system
- Suitable for wheelchairs with 22mm push bars
- Made of aluminum
- Total weight of approx. 1kg (large model)

DESCRIPTION	VERSION	WHEELCHAIR WIDTH	ARTICLE NO.
Foldable headrest	Small	30 - 36cm	900300330-S
Foldable headrest	Medium	36 - 46cm	900300330-M
Foldable headrest	Large	42 - 54cm	900300330-L



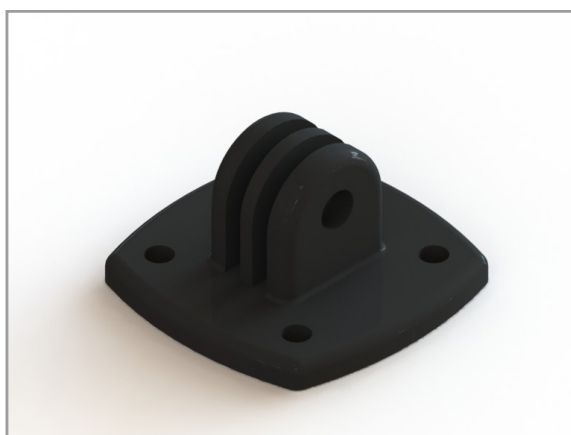
## MOUNTING PART | BALL CLAMP



- Material: steel
- Finish: chrome
- Suitable for headrests and side pillows

DESCRIPTION	ARTICLE NO.
Ball clamp mounting part	4045

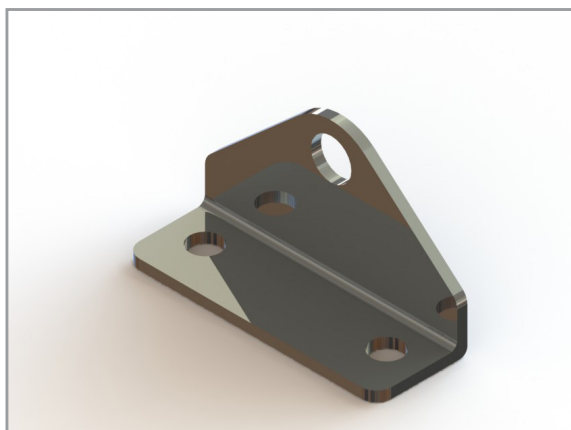
## MOUNTING PART | PLASTIC



- Material: nylon reinforced plastic
- Strong fixation
- Suitable for adjustment parts: 8323, 83231, 83232 and 83233
- 6mm fixation points
- 35-35mm fixation point distance

DESCRIPTION	FIXATION	ARTICLE NO.
Plastic mounting part	4 fixation points	8300

## MOUNTING PART | METAL



- Suitable for all our headrests
- Available in chrome and black
- 6mm fixation points
- 35mm fixation point distance

DESCRIPTION	COLOUR	ARTICLE NO.
Headrest mounting part	Chrome	9715
Headrest mounting part	Black	97151

## MOUNTING PART | 2 FIXATION POINTS



- Integrated nut
- 35mm fixation point distance
- Suitable for adjusting system 8323, 83231, 83232 and 83233

DESCRIPTION	FIXATION	ARTICLE NO.
Mounting part	2 fixation points	83001

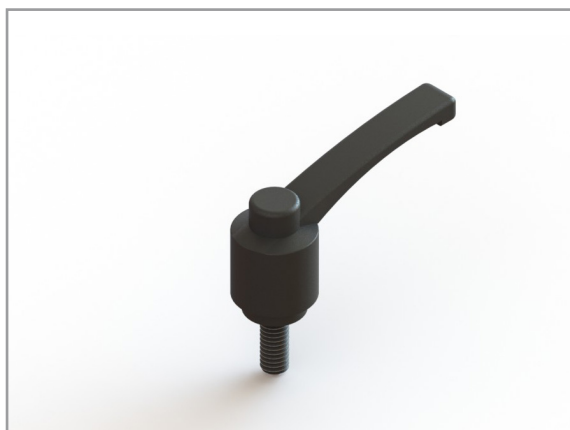
## RIDGE/STOP | ADJUSTABLE



- Fixing the height of any headrest by adding this ridge to the headrest holder
- Adjustable
- Suitable for all standard headrest systems

DESCRIPTION	ARTICLE NO.
Ridge/Stop for headrest system	83235

## FIXATION | CLAMPING HANDLE

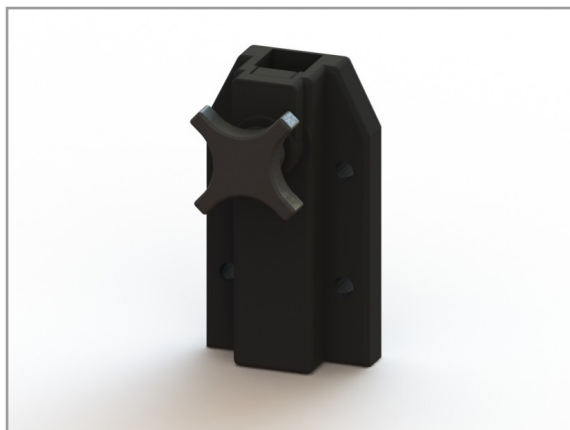


- By replacing the bolts of headrest holder by a clamping handle, you can adjust the headrest without the use of tools
- This can be done with headrest adjustment systems: 8323, 8323\_1, 83231, 83232 and 83233
- Other sizes of clamping handles or knobs can be found on pages 92-93

DESCRIPTION	DIMENSIONS	ARTICLE NO.
Clamping handle	M8 x 20mm	9550
Clamping handle	M8 x 25mm	9551
Clamping handle	M8 x 30mm	9549



## HEADREST MOUNTING PART | PLASTIC



- Due to the plastic fixation system the tube inside will not be damaged when it's tightened
- Including knob
- Suitable for all our headrest holders

DESCRIPTION	FIXATION	ARTICLE NO.
Headrest mounting part	35-50mm	83234
Headrest mounting part	35-35mm	83238
Starknob	M8x16mm	8338

## HEADREST MOUNTING PART | TYPE 888



- Strong headrest mounting part made of steel
- Including knob
- Suitable for all our headrest holders

DESCRIPTION	FIXATION	ARTICLE NO.
Headrest mounting part	45-45mm	9721
Starknob	M8x20mm	83381

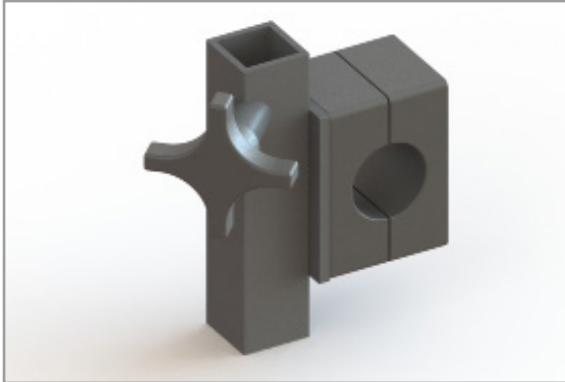
## HEADREST MOUNTING PART | UNIPRO



- Wide mounting range
- Slotted fixation points
- Including knob
- Suitable for all our headrest holders

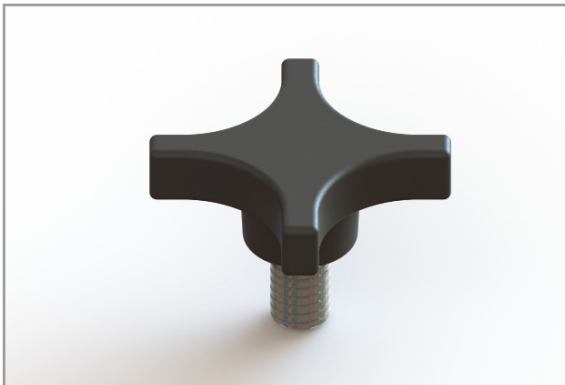
DESCRIPTION	FIXATION	ARTICLE NO.
Headrest mounting part	Slotted holes	9797
Starknob	M8x20mm	83381

## HEADREST MOUNTING PART | TUBE ASSEMBLY

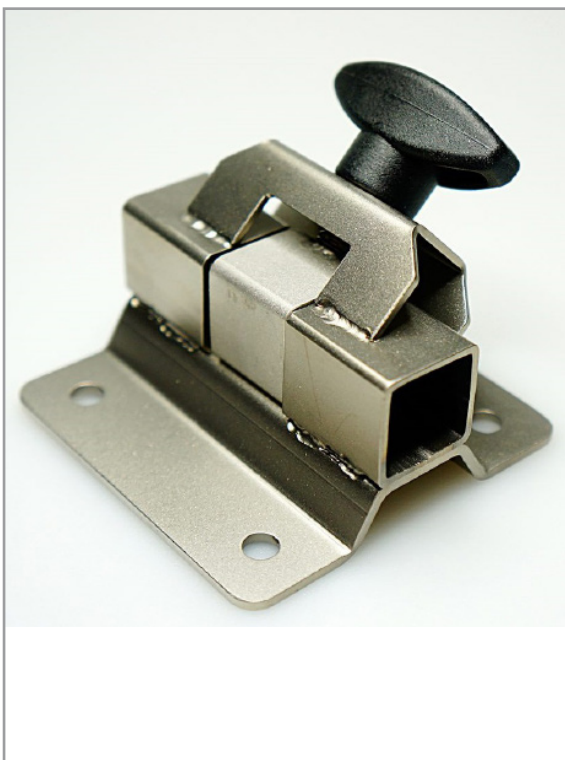


- Aluminum tube clamp
- Including fasteners and knob
- Suitable for all our headrest holders
- Suitable for webbed backrests

DESCRIPTION	FIXATION	ARTICLE NO.
Headrest mounting part	19mm tube	9739019
Headrest mounting part	22mm tube	9739022
Starknob	M8x20mm	83381



## HEADREST MOUNTING PART | STAINLESS STEEL

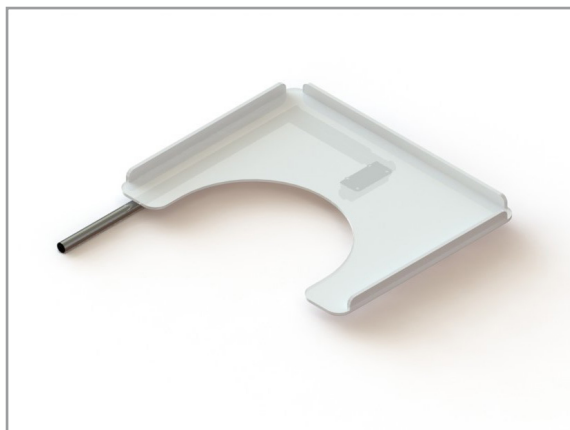


- High fixation power because of its special construction
- Fully made of stainless steel
- Including clamping screw

DESCRIPTION	FIXATION	ARTICLE NO.
Headrest mounting part	50-50mm	9736



## THERAPY TABLE | WITH ABDOMINAL CUT



- Thickness of the table: 8mm
- Material: PMMA (Perspex Acrylate)
- Therapy table holder must be ordered separately.  
See our therapy table holders and reception tubes on page 29 to 32

DESCRIPTION	DIMENSIONS	ARTICLE NO.
Therapy table with abdominal cut	500x490mm	83629
Therapy table with abdominal cut	550x490mm	83628
Therapy table with abdominal cut	600x490mm	83627
Therapy table with abdominal cut	650x490mm	83626

## THERAPY TABLE | COLLEGE / HALF



- Thickness of the table: 8mm
- Material: PMMA (Perspex Acrylate)
- The therapy table holder must be ordered separately.

DESCRIPTION	DIMENSIONS	ARTICLE NO.
Therapy table college half	300x490mm	836200
Therapy table holder college	n.a.	9871

## UPHOLSTERY | FINISHING PROFILE



- Made of extremely flexible rubber
- To cover the edges of the seating systems, therapy tables, armrests and backrests
- There is a MOQ of 1000 meter for the colours grey and blue

DESCRIPTION	LENGTH	COLOUR	ARTICLE NO.
Upholstery	100 meter	Black	8343-Z
Upholstery	100 meter	Grey	8343-G
Upholstery	100 meter	Blue	8343-B



## THERAPY TABLE HOLDER | WITH H-PLATE



- The bended tube is chrome and the H-Plate is powder coated in black
- Finished with plastic caps
- The H-plate is provided with slotted holes with a reach of 50 to 170mm

DESCRIPTION	DIAMETER	ARTICLE NO.
Therapy table holder with H-Plate	19mm	8532
Therapy table holder with H-Plate	22mm	8530

## THERAPY TABLE HOLDER | WIDTH ADJUSTABLE



- Width adjustable with a reach of 150mm
- Surface treatment: SS (9872) chrome (others)
- 2 fixation points with a distance of 80mm (M6)

DESCRIPTION	TOTAL LENGTH	DIAMETER	ARTICLE NO.
Therapy table holder adjustable	600.00mm	18mm	9872
Therapy table holder adjustable	538.50mm	20mm	97903
Therapy table holder adjustable	538.50mm	22mm	9790
Therapy table holder adjustable	638.50mm	22mm	97901
Plastic mounting part	n.a.	n.a.	9819

## THERAPY TABLE HOLDER | HEIGHT ADJUSTABLE



- Height adjustable with a reach of 75mm
- 4 fixation points
- Dimensions: 4 holes (fixation plate) 37x37mm, total length of the product: 550mm

DESCRIPTION	DIAMETER	ARTICLE NO.
Therapy table holder height adjustable	19mm	8533



## THERAPY TABLE HOLDER | FIXED VERSION



- 4 fixation points
- Dimensions: 4 holes (fixation plate) 35.50x55.50mm
- Total length: 560mm

DESCRIPTION	DIAMETER	ARTICLE NO.
Therapy table holder fixed	19mm	8535

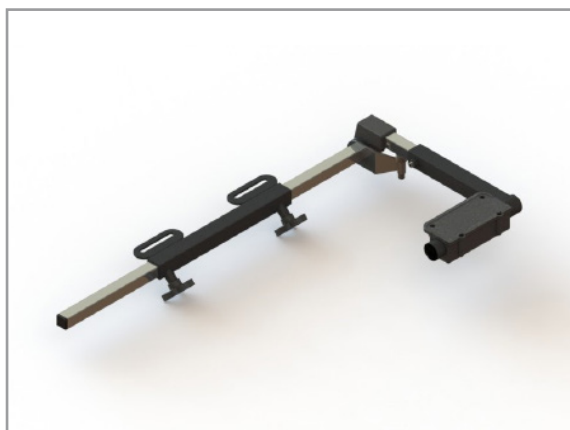
## THERAPY TABLE HOLDER | DOUBLE



- Diameter: 22mm
- Slotted holes with distance of 120mm
- Finished with plastic caps

DESCRIPTION	VERSION	ARTICLE NO.
Therapy table holder double	Set	9794
Therapy table holder double	Left	9794_L
Therapy table holder double	Right	9794_R

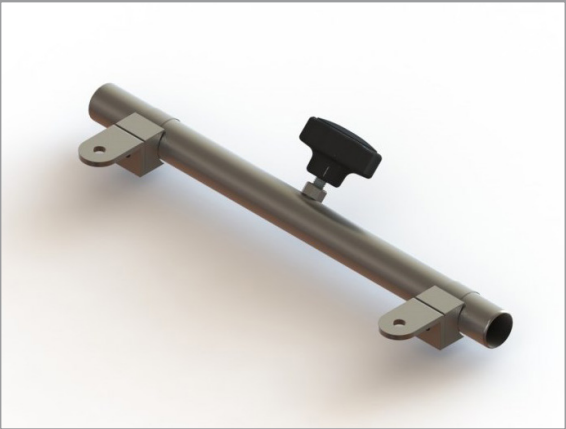
## THERAPY TABLE HOLDER | COLLEGE



- The left and right version are easy to switch
- Including reception tube
- 2 fixation points with a distance of 80mm (M6)

DESCRIPTION	VERSION	ARTICLE NO.
Therapy table holder college	Left	9871_L
Therapy table holder college	Right	9871_R

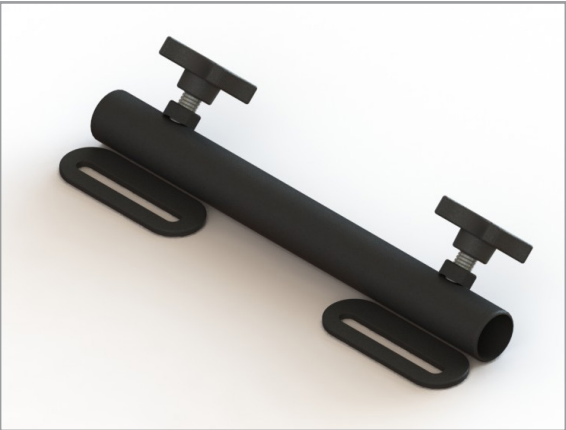
RECEPTION TUBE | ADJUSTABLE



- Material: stainless steel
- Easy to adjust
- Total length: 265mm

DESCRIPTION	DIAMETER	REACH	ARTICLE NO.
Reception tube adjustable	18mm	Adjustable	9869
Reception tube adjustable	19mm	Adjustable	986819
Knob SS (is included)	n.a.	M6x20	8339

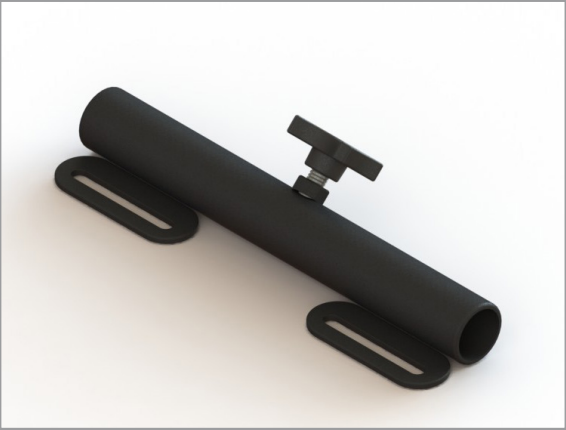
RECEPTION TUBE | 2 KNOBS



- High quality
- Including 2 knobs

DESCRIPTION	DIAMETER	REACH	ARTICLE NO.
Reception tube	19mm	88-177mm	9893
Reception tube	22mm	86-195mm	59511
Starknob	n.a.	M8x16mm	8338

RECEPTION TUBE | 1 KNOB



- High quality
- Including knob

DESCRIPTION	DIAMETER	REACH	ARTICLE NO.
Reception tube	22mm	86-195mm	59512
Reception tube	22mm	128-182mm	59513
Starknob	n.a.	M8x16mm	8338



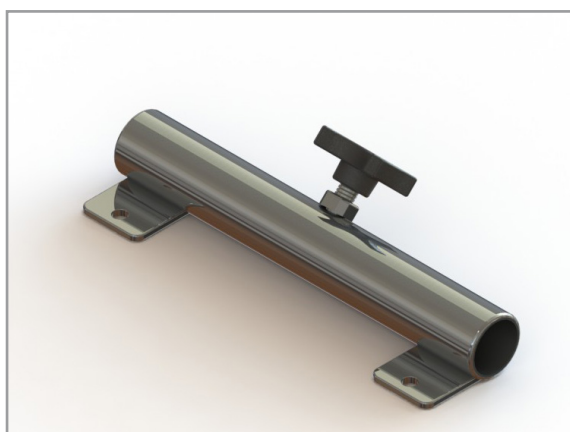
## RECEPTION TUBE | 1 KNOB



- Flat shaped mounting plate
- Including knob

DESCRIPTION	DIAMETER	REACH	ARTICLE NO.
Reception tube	22mm	111-158mm	59515
Starknob	n.a.	M8x16mm	8338

## RECEPTION TUBE | CHROME



- Surface treatment: chrome
- Including knob

DESCRIPTION	DIAMETER	REACH	ARTICLE NO.
Reception tube	22mm	144-156mm	59544
Starknob	n.a.	M8x16mm	8338

## THERAPY TABLE HOLDER | MOUNTING PART



- This is a replacement/spare part for the therapy table (article number 9790 and 97901) on page 29
- Material: plastic

DESCRIPTION	FIXATION	ARTICLE NO.
Therapy table holder mounting part	79.30mm	9819

## ARMREST | SMALL



- Adjustable in angle
- For the Nivara Lifty, Samsara and Spider wheelchairs
- Suitable for armrest holders of 15x15mm and therapy table holders of 19mm

DESCRIPTION	TYPE	ARTICLE NO.
Armrest a pcs	15x15mm	8511
Armrest a pcs, with angle blocking	15x15mm	85111

## ARMREST | STANDARD



- Armrest for the Dego II, Varia and Plato wheelchairs
- Suitable for armrest holders of 20x20mm and therapy table holders of 19mm
- Steel hinge to adjust the angle

DESCRIPTION	TYPE	ARTICLE NO.
Armrest a pcs	20x20mm	83051

## ARMREST | COMPLETE SET



- Height and width adjustable
- Suitable for triple chairs or nursing chair
- Attach to the frame with the included fasteners

DESCRIPTION	TYPE	ARTICLE NO.
Armrest per set	150x250x280mm	83061



ARMPAD| P-SHAPED



- Provided with Pro Skin cover
- Suitable for both the active as passive wheelchair user

DESCRIPTION	DIMENSIONS LxWxH	ARTICLE NO.
P-shaped armpad left	400x120mm	41151-L
P-shaped armpad right	400x120mm	41151-R
P-shaped armpad per set	400x120mm	41151
P-shaped armpad left	460x120mm	41152-L
P-shaped armpad right	460x120mm	41152-R
P-shaped armpad per set	460x120mm	41152



ARMPAD | 233MM



- Plastic bottom plate
- M5 fixation points

DESCRIPTION	FIXATION	DIMENSIONS LxWxH	ARTICLE NO.
Armpad	85/140mm	233x50x30	69931



ARMPAD | 240MM



- Material: Polyurethane
- M5 fixation points

DESCRIPTION	FIXATION	DIMENSIONS LxWxH	ARTICLE NO.
Armpad	85/130mm	240x50x30mm	69934

**ARMPAD | 240MM**

- Material: Polyurethane
- M5 fixation points

DESCRIPTION	FIXATION	DIMENSIONS LxWxH	ARTICLE NO.
Armpad	104mm	240x42x30mm	7014

**ARMPAD | 280MM**

- Material: Polyurethane

DESCRIPTION	FIXATION	DIMENSIONS LxWxH	ARTICLE NO.
Armpad	60/90/150mm	280x55x30	7004
Armpad	175mm	280x55x30	7005
Armpad	Universal	280x60x30	7002

**ARMPAD | 330MM**

- Material: Polyurethane
- Wooden inner plate
- Universal fixation

DESCRIPTION	DIMENSIONS LxWxH	ARTICLE NO.
Armpad	330x50x25	7016





## ARMPAD | 350MM



- Material: Polyurethane
- M5 fixation points

DESCRIPTION	FIXATION	DIMENSIONS LxWxH	ARTICLE NO.
Armpad	85/130mm	350x120x33mm	7003

## ARMPAD | 360MM



- Material: Polyurethane

DESCRIPTION	FIXATION	DIMENSIONS LxWxH	ARTICLE NO.
Armpad	250mm	360x50x25mm	7001

## ARMREST ANGLE ADJUSTER | 19MM

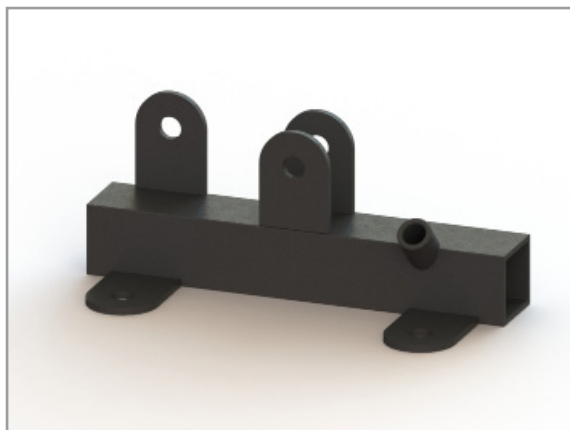


- Sub-part of armrest 8511 (page 33)
- 8mm fixation points
- Total length: 150mm
- For round tubes of 19mm

DESCRIPTION	FIXATION	TYPE	ARTICLE NO.
Armrest angle adjuster	110mm	19mm	8306



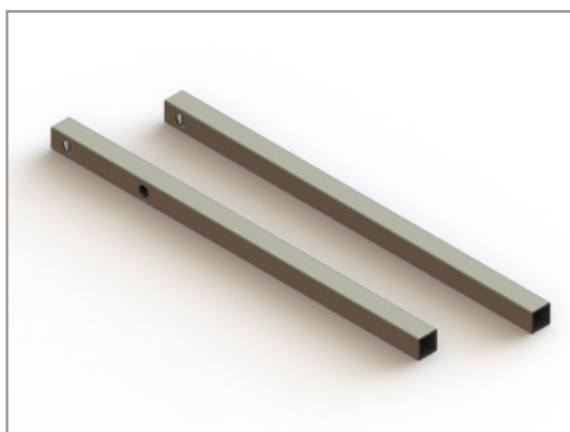
## ARMREST ANGLE ADJUSTMENT | TYPE 013



- 8mm fixation points
- Total length: 150mm
- Extra strip to limit the angle
- Inner diameter: 20x20mm
- On the image to the left, the left version is shown

DESCRIPTION	FIXATION	TYPE	ARTICLE NO.
Armrest angle adjustment	110mm	Left	97001
Armrest angle adjustment	110mm	Right	97002

## ARMREST HEIGHT ADJUSTMENT | 15X15



- Total length: 295mm
- 9734 is a sub-part of armrest 8511
- 9733 is a sub-part of armrest 85111
- 8mm fixation points

DESCRIPTION	TYPE	ARTICLE NO.
Armrest height adjustment	1 fixation point	9734
Armrest height adjustment	2 fixation points	9733

## ARMREST HOLDER | 15X15

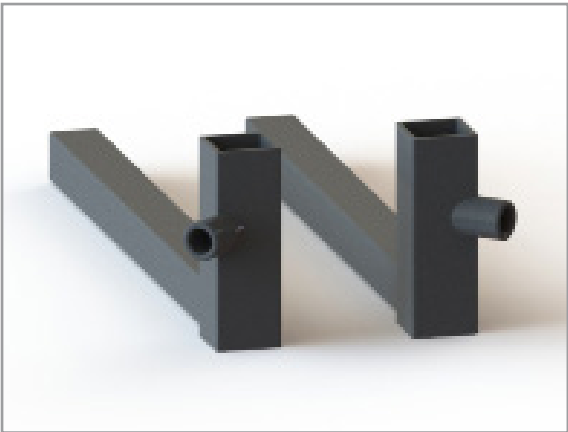


- For armrests 8511 and 85111
- Height adjustable
- For square tubes of 15x15mm

DESCRIPTION	TYPE	ARTICLE NO.
Armrest holder type 307	Left	9746
Armrest holder type 307	Right	9747
Knob	M8x20mm	8348



ARMREST HOLDER | 15X15

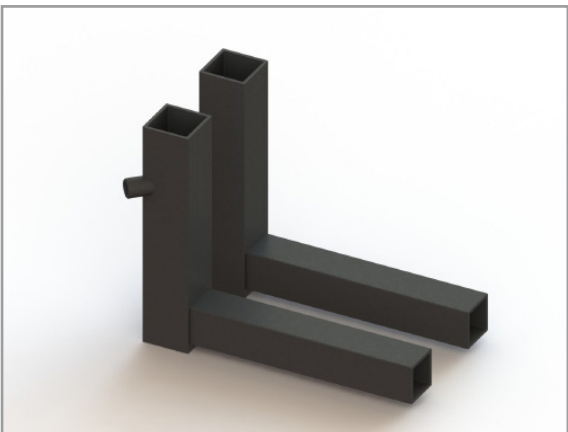


- Height adjustable
- For square tube of 20x20mm

DESCRIPTION	TYPE	ARTICLE NO.
Armrest holder type 300	Left	97401
Armrest holder type 300	Right	97411
Knob	M8x20mm	8348



ARMREST HOLDER | 20X20

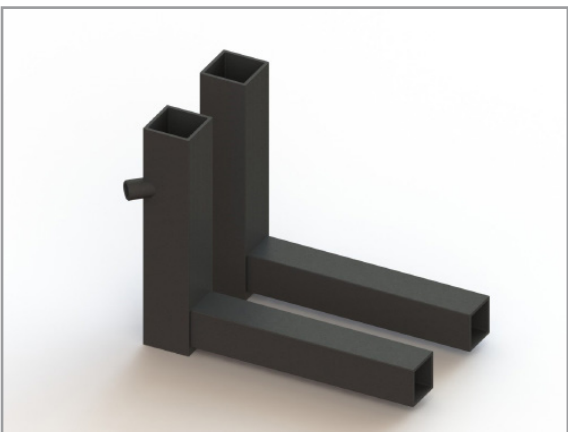


- For armrest 83051
- Height adjustable
- For square tube of 20x20mm

DESCRIPTION	TYPE	ARTICLE NO.
Armrest holder	Left	83292
Armrest holder	Right	83293
Knob	M8x20mm	8348



ARMREST HOLDER | 25X25



- Height adjustable
- For square tube of 25x25mm

DESCRIPTION	TYPE	ARTICLE NO.
Armrest holder	Left	8329
Armrest holder	Right	83291
Knob	M8x20mm	8348

## LEGREST | ADJUSTABLE



- Angle adjustable with hinges on the knee and ankle
- Adjustable upper and lower leg length and angle
- For all our wheelchairs on pages 6 to 11

DESCRIPTION	ARTICLE NO.
Legrest adjustable (per set)	6931
Calfpad 165x140mm	7010

## LEGREST | STANDARD



- Including footrest and heel strap
- With article numbers 8701, 8702 and 8703 these legrests are suitable for our wheelchairs
- Detachable/swing away and in height adjustable footrests

DESCRIPTION	TYPE	ARTICLE NO.
Legrest standard	Left	6992
Legrest standard	Right	6989
Legrest hook	n.a.	8701
Legrest coupling part	Left	8702
Legrest coupling part	Right	8703

## BLUNT SUPPORT | ADJUSTABLE



- Foldable
- Height adjustable
- With article numbers 8701, 8702 and 8703 these legrests are suitable for our wheelchairs

DESCRIPTION	TYPE	ARTICLE NO.
Amputation / blunt support	Left	6990
Amputation / blunt support	Right	6991
Legrest hook	n.a.	8701
Legrest coupling part	Left	8702
Legrest coupling part	Right	8703



## LEGREST | COMFORT



- Depth and length adjustable
- Angle adjustable footplates
- Foldable, detachable and height adjustable calfpads
- For all our wheelchairs on pages 6 to 11

DESCRIPTION	TYPE	ARTICLE NO.
Legrest comfort	Left	8369
Legrest comfort	Right	8368
Legrest comfort	Set	8370

## LEGREST | CENTRAL 2G GAS SPRING



- Angle adjustable with gas spring
- Foot spire angle adjustment
- Adjustable lower-upper leg length

DESCRIPTION	ARTICLE NO.
Central legrest, gas spring adjustment	83027
Calfpad standard	4116
Calfpad with side pillows	4117
Footplate for central legrest	9201

## LEGREST | CENTRAL MANUAL



- Manual adjustment (stepless)
- Foot spire angle adjustment
- Adjustable lower-upper leg length

DESCRIPTION	ARTICLE NO.
Central legrest, manual	8302
Calfpad standard	4116
Calfpad with side pillows	4117
Footplate for central legrest	9201

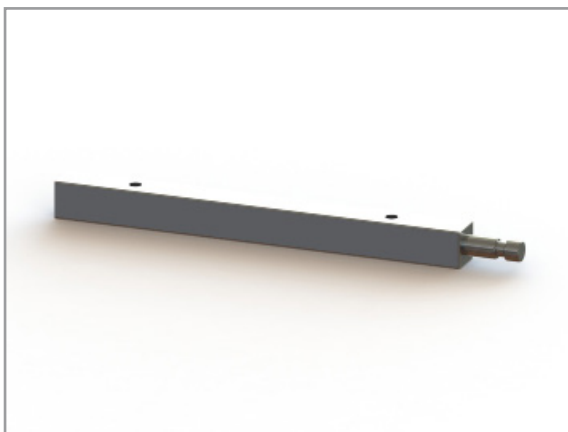
## LEGREST | PLASTER SUPPORT



- For most wheelchairs from Bischoff & Bischoff, van Os Medical, Vermeiren and Drive Medical
- Detachable and height adjustable
- Including fasteners and user manual

DESCRIPTION	LENGTH	ARTICLE NO.
Plaster support standard	700mm	19061
Plaster support short (amputation)	400mm	5006

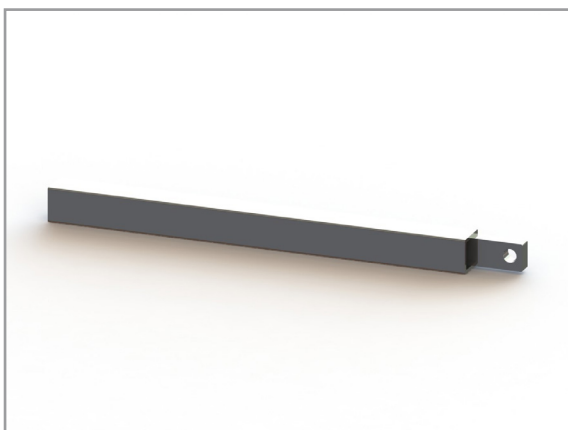
## FOOTREST HOLDER | TYPE 892



- For footplate assembly
- Detachable with integrated hook
- 6mm fixation points
- 20x20mm tube

DESCRIPTION	LENGTH	ARTICLE NO.
Footrest holder detachable	220mm	9730

## FOOTREST HOLDER | TYPE 893

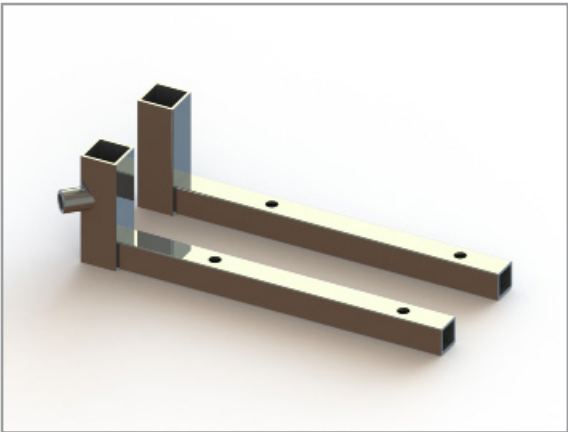


- 8mm fixation point
- 20x20mm tube

DESCRIPTION	LENGTH	ARTICLE NO.
Footrest holder detachable	245mm	9731
Footrest holder detachable	450mm	9732



FOOTREST HOLDER | TYPE 300

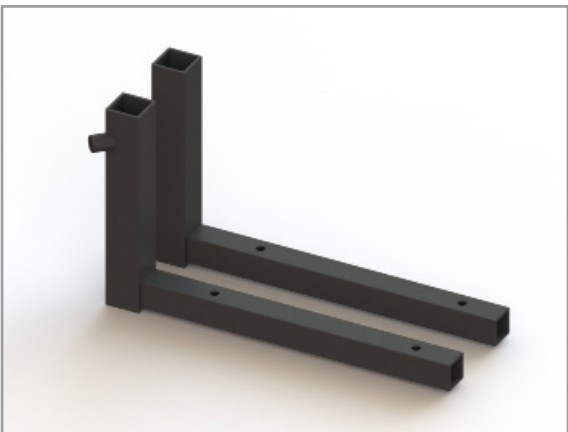


- For footplate assembly
- For tubes of 15x15mm
- Height adjustable

DESCRIPTION	TYPE	ARTICLE NO.
Footrest 300 chrome	Left	9740
Footrest 300 chrome	Right	9741



FOOTREST HOLDER | TYPE 305

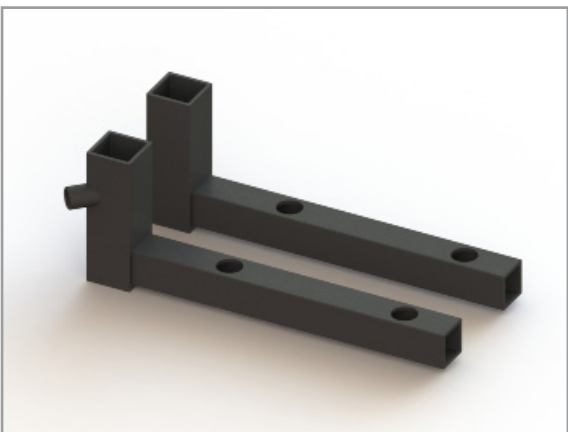


- For footplate assembly
- For tubes of 15x15mm
- Height adjustable

DESCRIPTION	TYPE	ARTICLE NO.
Footrest 305 black	Left	9742
Footrest 305 black	Right	9743



FOOTREST HOLDER | TYPE 306



- For footplate assembly
- For tubes of 20x20mm
- Height adjustable

DESCRIPTION	TYPE	ARTICLE NO.
Footrest 306 black	Left	9744
Footrest 306 black	Right	9745

FOOTPLATE | CENTRAL LEGREST



- Foot spire angle adjustment
- Suitable on central legrests 83027
- Fixation points available for mounting the footplate

DESCRIPTION	ARTICLE NO.
Foot spire adjustment	9821

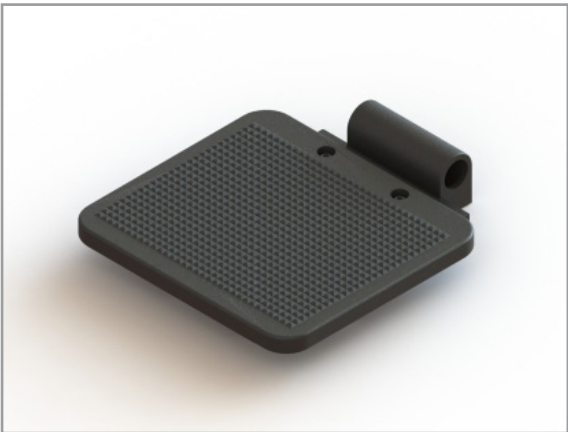
FOOTPLATE | CENTRAL LEGREST



- For central legrests 83027
- Dimensions: 390x250mm

DESCRIPTION	ARTICLE NO.
Footplate for central legrest	9201

FOOTPLATE | PLASTIC



- Suitable for 19mm tubes
- Dimensions: 200x180mm
- Width adjustable

DESCRIPTION	ARTICLE NO.
Footplate plastic	9200



CALFPAD | PRO SKIN



- Calfpad with Pro Skin cover
- 4x M6 fixation points
- For central legrests 8302 and 83027
- On the image to the left, the calfpad with side pillows is shown

DESCRIPTION	TYPE	ARTICLE NO.
Calfpad flat	37x25x3.50cm	4116
Calfpad with side pillows	43x22x35cm	4117



CALFPAD | CALFPLATE



- Material: Polyurethane
- Metal plate inside
- M16 inner thread fixation

DESCRIPTION	TYPE	ARTICLE NO.
Calfpad / calfplate	295x190cm	7000



CALFPAD | STANDARD



- Material: Polyurethane
- Wooden plate inside
- M6 fixation points
- Usable as side pillow and calfpad

DESCRIPTION	TYPE	ARTICLE NO.
Calfpad, small	148x120x30cm	70101
Calfpad, medium	165x140x40cm	7010
Calfpad, large	230x140x35cm	69933



## HANDBRAKE ALUMINUM | SILVER



- Including stainless steel fasteners
- Slotted holes, distance: 50 to 80mm

DESCRIPTION	MATERIAL	TYPE	ARTICLE NO.
Handbrake	Aluminum	Left	4009
Handbrake	Aluminum	Right	4010

## HANDBRAKE ALUMINUM | BLACK



- 19mm clamping diameter

DESCRIPTION	MATERIAL	TYPE	ARTICLE NO.
Handbrake	Aluminum	Left	4041
Handbrake	Aluminum	Right	4042
Tube clamp	Aluminum	19-22mm	8554
Tube clamp	Aluminum	19-25mm	4020

## HANDBRAKE ALUMINUM | PULL TYPE



- 19mm clamping diameter

DESCRIPTION	MATERIAL	TYPE	ARTICLE NO.
Handbrake	Aluminum	Left	40411
Handbrake	Aluminum	Right	40421
Tube clamp	Aluminum	19-22mm	8554
Tube clamp	Aluminum	19-25mm	4020

## SCISSOR BRAKE ALUMINUM | STANDARD



- Horizontal mechanism

DESCRIPTION	MATERIAL	TYPE	ARTICLE NO.
Scissor brake	Aluminum	Left	4018
Scissor brake	Aluminum	Right	4017

## SCISSOR BRAKE ALUMINUM | DELUXE



- Horizontal mechanism
- Extremely easy to control because of the double handle system

DESCRIPTION	MATERIAL	TYPE	ARTICLE NO.
Scissor brake deluxe	Aluminum	Left	40181
Scissor brake deluxe	Aluminum	Right	40171

## DRUMBRAKE PLATE | 70MM SHOE



- M12 bolt mounting to the wheel
- Brake lever 83162 included
- With cable controlled drumbrakes, 9420 and 9423 are required

DESCRIPTION	TYPE	ARTICLE NO.
Drum brake anker	Left	83255-L
Drum brake anker	Right	83255-R
Cable adjusting bolt with stop	M6x40mm	9420
Cable adjusting nipple	7x15mm	9423
Brake lever	Standard	83162

## BRAKE LEVER | SHORT TYPE



- For cable controlled gas springs
- 22mm tube assembly
- Including cable adjuster

DESCRIPTION	TYPE	ARTICLE NO.
Brake lever	Short	83371
Cable adjuster	M5x24mm	9422

## BRAKE LEVER | STANDARD TYPE



- 22mm tube assembly
- Including cable adjuster

DESCRIPTION	TYPE	ARTICLE NO.
Brake lever	Standard	9412
Cable adjuster	M7x30mm	9421

## BRAKE LEVER | DOUBLE CABLE ENTRY



- For one-hand operating of brakes or gas springs.
- 22mm tube assembly
- Including 2pcs cable adjusters

DESCRIPTION	TYPE	ARTICLE NO.
Brake lever	Double cable entry	9413
Cable adjuster	M7x30mm	9421



## BRAKE LEVER | WITH PARKING FUNCTION



- 4 parking positions
- 22mm tube assembly
- Including cable adjuster

DESCRIPTION	TYPE	ARTICLE NO.
Brake lever	Parking function	9415
Cable adjuster	M7x30mm	9421

## BRAKE CABLE | INNER AND OUTER CABLE



- Nylon lined
- Brass protective cover on both ends
- Deviating sizes are available on request

DESCRIPTION	TYPE	ARTICLE NO.
Brake cable inner/outer	155/130cm	9411
Brake cable inner/outer	180/155cm	9432

## BRAKE CABLE | OUTER CABLE ON ROLL



- Nylon lined
- The cable can be cut on required size without unpacking

DESCRIPTION	TYPE	ARTICLE NO.
Outer cable on roll	50 meter	9410
Cable sleeve	Brass	9425

## BRAKE CABLE | INNER CABLE



- High quality and extremely flexible

DESCRIPTION	NIPPLE	LENGTH	THICKNESS	ARTICLE NO.
Brake cable inner	7x6mm	1080mm	1,50mm	94141
Brake cable inner	7x6mm	1160mm	1,50mm	94142
Brake cable inner	7x6mm	1600mm	1,50mm	94143
Brake cable inner	7x6mm	1800mm	1,50mm	9414
Brake cable inner	5x6mm	2000mm	1,25mm	94171
Brake cable inner	7x6mm	2250mm	1,50mm	9417

## CABLE ADJUSTER | VARIOUS TYPES



- Below lengths are the total length of the adjuster
- Including nut

DESCRIPTION	ARTICLE NO.
Cable adjusting bolt M5x34	9422
Cable adjusting bolt M6x34	9436
Cable adjusting bolt M6x40	94361
Cable adjusting bolt M7x30 (with slot)	9421

## CABLE ADJUSTER | WITH STOP



- Including stop and nut

DESCRIPTION	ARTICLE NO.
Cable adjusting bolt M6x40 (with stop)	9420



## CABLE ADJUSTING NIPPLE | VARIOUS TYPES



- Suitable for all our brake cables

DESCRIPTION	ARTICLE NO.
Cable adjusting nipple 5x7mm	94231
Cable adjusting nipple 7x15mm	9423
Cable adjusting nipple 8x15mm	94232

## CABLE SLEEVE | CENTERING NIPPLE



- Suitable for standard cables of 5mm (outer cable)

DESCRIPTION	ARTICLE NO.
Cable sleeve / centering nipple	9425

## CABLE END-SLEEVE | ANTI FRAY



- Prevents fraying of the inner cable
- Unit: box of 200pcs

DESCRIPTION	ARTICLE NO.
Cable end sleeve anti fray (per box)	9438

## CABLE CLAMP | BRAKE CABLE GUIDER



- Guides the braking cable along the tube
- For tube diameters 22 to 26mm

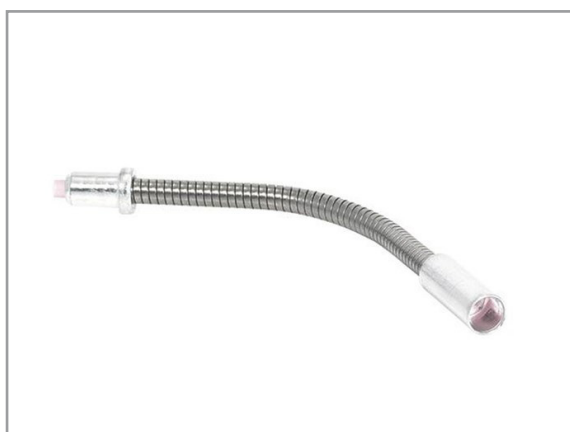
### DESCRIPTION

Cable clamp plastic black (22-26mm)

### ARTICLE NO.

9416

## CABLE GUIDER | FLEXIBLE



- 90 to 130 degrees

### DESCRIPTION

Cable guider flexible

### ARTICLE NO.

9426

## BRAKE PART | FOR 12 INCH WHEELS



- Spare part for 12 inch wheels (used on Dego II wheelchairs)
- Mounted on the rim with included screws
- Suitable for the items 8551 (pneumatic tyre) 8552 (solid tyre) and 9018 (12 inch rim)

### DESCRIPTION

Brakepart for 12 inch wheels

### ARTICLE NO.

7105

## BRAKE LEVER CAP | FOR DEGO II WHEELCHAIRS



- For plates of 20x6mm
- Spare part for the Dego II and Varia wheelchairs

## DESCRIPTION

Brake lever cap black

## ARTICLE NO.

5576

## BRAKE STRAP | FOR PLATO WHEELCHAIRS



- Spare part for the Plato wheelchair

## DESCRIPTION

Brake strap left

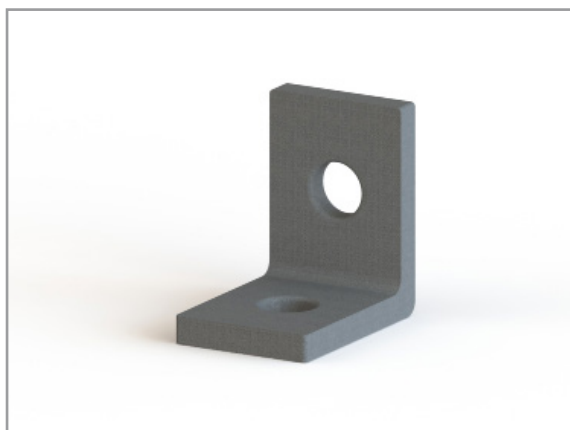
Brake strap right

## ARTICLE NO.

8312-L

8312-R

## BRAKE ADJUSTER | FOR PLATO WHEELCHAIRS



- Dimensions: 23x23x16mm
- Thickness: 3mm
- Fixation points: 6mm
- Spare part for Plato wheelchairs

## DESCRIPTION

Brake adjuster

## ARTICLE NO.

8313



## WHEEL WITH PNEUMATIC TYRE | 6 INCH



- Bearing: Ball bearing type 6000 RS
- Axle diameter: 8mm
- Valve: AV 70/30

INCH	SIZE	HUB LENGTH	TYRE	ARTICLE NO.
6 x 1 1/4	150x30	36mm	Grey	9019
6 x 1 1/4	150x30	36mm	Black	90191

## WHEEL WITH PNEUMATIC TYRE | 7 INCH



- Bearing: Ball bearing type 6000 RS
- Axle diameter: 8mm
- Valve: AV 30/90

DESCRIPTION	SIZE	HUB LENGTH	TYRE	ARTICLE NO.
7 x 1 3/4	175x40	60mm	Grey	90512
7 x 1 3/4	175x40	60mm	Black	90511

## WHEEL WITH PNEUMATIC TYRE | 8 INCH



- Bearing: Ball bearing type 6000 RS
- Axle diameter: 8mm
- Valve: AV 30/90

INCH	SIZE	HUB LENGTH	TYRE	ARTICLE NO.
8 x 1 1/4	200x30	44mm	Grey	8991
8 x 1 1/4	200x30	44mm	Black	89911
8 x 2.0	200x50	60mm	Grey	8981
8 x 2.0	200x50	60mm	Black	89811



## WHEEL WITH PNEUMATIC TYRE | 12 INCH



- Bearing: Ball bearing type 6201RS
- Axle diameter: 12mm
- Plastic rim
- Valve: AV 90/90

INCH	HUB LENGTH	TYRE	TYPE	ARTICLE NO.
12 1/2 x 2 1/4	38mm	Grey	Standard	8994
12 1/2 x 2 1/4	38mm	Grey	Drumbrake	8995
12 1/2 x 2 1/4	38mm	Grey	Brake	8551

## WHEEL WITH PNEUMATIC TYRE | 16 INCH



- Bearing: Ball bearing type 6201RS
- Material: Plastic (rim)
- Axle diameter: 12mm
- ETRTO: 47-305

INCH	HUB LENGTH	TYRE	TYPE	ARTICLE NO.
16 x 1.75	53mm	Grey	Standard	89961
16 x 1.75	53mm	Black	Standard	8996

## WHEEL WITH PNEUMATIC TYRE | 16 INCH



- Bearing: Ball bearing type 62012RS
- Material Aluminum (rim)
- Hub: Drumbrake hub 70mm
- Axle diameter: 12mm
- ETRTO: 47-305

INCH	HUB LENGTH	TYRE	TYPE	ARTICLE NO.
16 x 1.75	53mm	Grey	Drumbrake	8747
16 x 1.75	53mm	Black	Drumbrake	87471

## WHEEL WITH PNEUMATIC TYRE | 20 TO 24 INCH



- Bearing: Ball bearing type 62012RS
- Axle diameter: 12mm
- Including aluminum pushrim

INCH	HUB LENGTH	TYRE	TYPE	ARTICLE NO.
20 x 1 3/8	53mm	Grey	Standard	77002
22 x 1 3/8	53mm	Grey	Standard	94842
24 x 1 3/8	53mm	Grey	Standard	94836

## WHEEL WITH PNEUMATIC TYRE | 20 - 24 INCH WITH DRUMBRAKE HUB



- Bearing: Ball bearing type 62012RS
- Axle diameter: 12mm
- Including aluminum pushrim

INCH	HUB LENGTH	TYRE	TYPE	ARTICLE NO.
20 x 1 3/8	53mm	Grey	Drumbrake	77001
22 x 1 3/8	53mm	Grey	Drumbrake	94841
24 x 1 3/8	53mm	Grey	Drumbrake	94834

## WHEEL WITH PNEUMATIC TYRE | 24 INCH SPECIAL



- Provided with an Ergo grip pushrim
- Specially made for extra grip
- Prevents the fingers from getting between the rim and pushrim
- Move the wheelchair with small effort

DESCRIPTION	ARTICLE NO.
24 inch wheel with Ergo pushrim	94835
Cable controlled drumbrake (set)	83802



## ANTI TIPPING WHEEL | 40MM



- For Nivara Lifty wheelchairs (page 12)
- Dimensions: 38x20
- Axle diameter: 6mm
- Material: Plastic

DESCRIPTION	ARTICLE NO.
Anti tipping wheel (a pcs)	9020

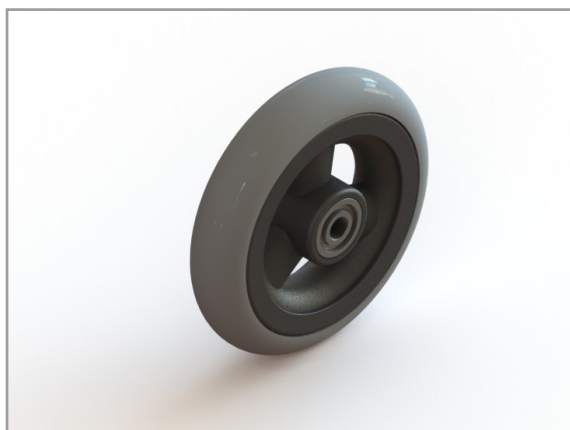
## SKATE WHEEL | 75MM



- Can be used as anti tipping wheel
- For mounting on swivel forks

DESCRIPTION	ARTICLE NO.
Skatewheel transparent	6021

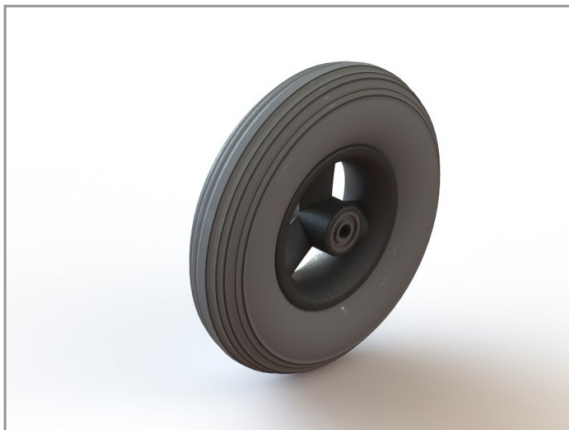
## WHEEL WITH SOLID TYRE | 5 TO 7 INCH



- Bearing: Ball bearing type 6000 RS
- Axle diameter: 8mm
- Polyurethane (PU) tyre

DESCRIPTION	HUB LENGTH	TYRE	ARTICLE NO.
100x25	36mm	Grey	8560
125x25	36mm	Grey	8559
150x30	36mm	Grey	8993
175x25	44mm	Grey	8958
175x40	60mm	Grey	9051

## WHEEL WITH SOLID TYRE | 8 INCH



- Bearing: Ball bearing type 6000 RS
- Axle diameter: 8mm
- Polyurethane (PU) tyre

DESCRIPTION	HUB LENGTH	TYRE	ARTICLE NO.
200x30	44mm	Grey	9003
200x30	60mm	Grey	90031
200x50	60mm	Grey	8990
200x50	60mm	Black	8982

## WHEEL WITH SOLID TYRE | 12 INCH



- Bearing: Ball bearing type 6201RS
- Axle diameter: 12mm
- Polyurethane (PU) tyre

INCH	HUB LENGTH	TYRE	TYPE	ARTICLE NO.
12 1/2 x 2 1/4	48mm	M28 Block	Standard	8988
12 1/2 x 2 1/4	48mm	M28 Block	Heavy Duty	89881
12 1/2 x 2 1/4	38mm	M28 Block	Standard	9196

## WHEEL WITH SOLID TYRE | 12 INCH BRAKED



- Bearing: Ball bearing type 6201RS
- Axle diameter: 12mm
- Polyurethane (PU) tyre

INCH	HUB LENGTH	TYRE	TYPE	ARTICLE NO.
12 1/2 x 2 1/4	38mm	M28 Block	Brake	8552
12 1/2 x 2 1/4	38mm	M28 Block	Drumbrake	9021



## WHEEL WITH SOLID TYRE | 16 INCH



- Bearing: Ball bearing type 6201RS
- Axle diameter: 12mm
- Material: Plastic (rim)
- Polyurethane (PU) tyre
- Tyre: Black with MTB outdoor pattern

INCH	HUB LENGTH	TYPE	ARTICLE NO.
16 x 1.90	53mm	Standard	8746

## WHEEL WITH SOLID TYRE | 20 TO 24 INCH



- Bearing: Ball bearing type 6201RS
- Axle diameter: 12mm
- Including aluminum pushrim

INCH	HUB LENGTH	TYRE	TYPE	ARTICLE NO.
20 x 1 3/8	53mm	Grey	Standard	7700
22 x 1 3/8	53mm	Grey	Standard	9484
24 x 1 3/8	53mm	Grey	Standard	9482
24 x 1 3/8	53mm	Grey	Remnaaf	9783

## WHEEL WITH SOLID TYRE | 30 TO 38 INCH



- Bearing: Ball bearing type 6201RS
- Axle diameter: 12mm
- Including aluminum pushrim

INCH	HUB LENGTH	TYRE	TYPE	ARTICLE NO.
30 x 1.0	53mm	Grey	Standard	8668
32 x 1.0	53mm	Black	Standard	8667
34 x 1.0	53mm	Grey	Standard	8666
36 x 1.0	53mm	Grey	Standard	8669
38 x 1.0	53mm	Black	Standard	8670



WHEEL WITH RUBBER TYRE | 4 INCH



- Axle diameter: 8mm
- Material Plastic black rim
- Tyre hardness: Shore A 70 (+/-5)

DESCRIPTION	HUB LENGTH	TYRE	ARTICLE NO.
100x32	36mm	Black	2510
100x32	46mm	Grey	2513

WHEEL WITH RUBBER TYRE | 5 INCH



- Axle diameter: 8mm
- Material Plastic black rim

DESCRIPTION	HUB LENGTH	TYRE	ARTICLE NO.
125x30	36mm	Grey	2506
125x30	46mm	Grey	2501
125x32	36mm	Black	2500
125x32	46mm	Grey	2505
125x37,50	42mm	Grey	2521
125x40	46mm	Black	2514
125x40	58mm	Black	2503

WHEEL WITH RUBBER TYRE | 5.5 INCH



- Axle diameter: 8mm
- Material Plastic black rim
- Tyre hardness: Shore A 45

DESCRIPTION	HUB LENGTH	TYRE	ARTICLE NO.
140x40	46mm	Black	2504
140x40	46mm	Grey	2519
140x40	58mm	Grey	2508



## WHEEL WITH RUBBER TYRE | 6 INCH



- Axle diameter: 8mm
- Material Plastic black rim
- Tyre hardness: Shore A 60 (+/-5)

DESCRIPTION	HUB LENGTH	TYRE	ARTICLE NO.
150x33	36mm	Grey	2512
150x33	46mm	Grey	2511

## WHEELS WITH RUBBER TYRE | 7 INCH



- Axle diameter: 8mm
- Material Plastic black rim
- Tyre hardness :Shore A 60 (+/-5)

DESCRIPTION	HUB LENGTH	TYRE	ARTICLE NO.
175x30	46mm	Grey	2509
178x35	36mm	Grey	2517
178x35	46mm	Grey	2516

## WHEELS WITH RUBBER TYRE | 8 INCH



- Axle diameter: 8mm
- Material Plastic black rim
- Tyre hardness: Shore A 70

DESCRIPTION	HUB LENGTH	TYRE	ARTICLE NO.
200x28	38mm	Grey	25071
200x28	46mm	Grey	2507
200x28	60mm	Grey	25072



SWIVEL WHEEL | BASIC



- Surface treatment: Galvanized (fork)
- Tyre: Solid rubber
- For indoor wheelchairs Samsara and the Stainless steel wheelchair

DESCRIPTION	VERSION	WHEELSIZE	ARTICLE NO.
Swivel wheel basic	Without brake	75mm	8659
Swivel wheel basic	With brake	75mm	8660

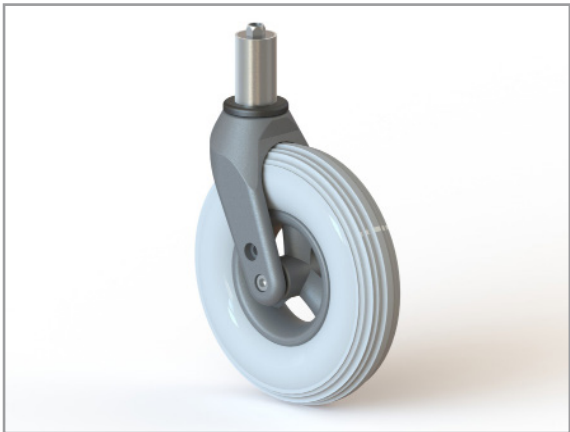
SWIVEL WHEEL | COMFORT



- Material: Plastic (fork)
- Tyre: Solid rubber with extra comfort
- For indoor wheelchairs Samsara and the Stainless steel wheelchair

DESCRIPTION	VERSION	TYRE	ARTICLE NO.
Swivel wheel comfort	Without brake	75mm	86603
Swivel wheel comfort	With brake	75mm	86601
Mounting pin	M8x15	n.a.	86602

SWIVEL WHEEL | 8 INCH



- 9208 is suitable for Spider, Nivara Lifty and Plato wheelchairs
- 92081 is suitable for Dego II and Varia wheelchairs
- Tyre: Polyurethane (PU)
- Axle diameter fork: 12mm

DESCRIPTION	SIZE	ARTICLE NO.
Swivel wheel with metal part	200x50	9208
Swivel wheel without metal part	200x50	92081



TUBES | FRONT WHEELS



- Valve: AV
- Including dust cap

INCH	SIZE	VALVE	ARTICLE NO.
6 x 1 1/4	150x30	AV 70/30 °	8917
7 x 1 1/4	175x25	AV 30/90 °	8919
7 x 1 3/4	175X45	AV 30/90 °	8915
8 x 1 1/4	200x30	AV 30/90 °	8921
8 x 2.0	200x50	AV 30/45 °	8915



TUBES | REAR WHEELS



- Valve: AV or FV
- Including dust cap

INCH	ETRTO	VALVE	ARTICLE NO.
10 x 2.0	54-152	AV 90/90 °	8888
12 1/2 x 2 1/4	62-203	AV	8901
16 x 1.75	45-305	AV	8925
16 x 2.125	57-305	AV	8898
18 x 1 3/8	37-390	AV	8925
20 x 1 3/8	37-451	AV	8904
20 x 1.75	47-406	AV	8909
22 x 1.0	37-489	AV	8932
24 x 1.0	25-540	AV	8908
24 x 1 3/8	37-540	AV	8911
24 x 1.75	47-507	AV	8934
26 x 1 3/8	37-590	AV	8913
26 x 1.75	47-559	FV	8926
28 x 1 5/8 x 1 1/8	37-622	FV	8889

On the image to the left, the AV valve is shown.

## TYRES | FRONT WHEELS



### PNEUMATIC TYRES FOR WHEELCHAIRS

- Pattern: Line
- With a tyre lever (8946 on page 71) the tyres are easy to assemble
- On the image to the left:  
Top: article number 8922  
Bottom: article number: 89161

INCH	SIZE	PATTERN	COLOUR	ARTICLE NO.
6 x 1 1/4	150x30	Line	Grey	8918
6 x 1 1/4	150x30	Line	Black	89181
7 x 1 3/4	175x45	Line	Grey	8920
7 x 1 3/4	175x45	Line	Black	89201
8 x 1 1/4	200x30	Line	Grey	8922
8 x 1 1/4	200x30	Line	Black	89221
8 x 2.0	200x50	Line	Grey	8916
8 x 2.0	200x50	Line	Black	89161

## TYRES | REAR WHEELS



### PNEUMATIC TYRES FOR WHEELCHAIRS

- On the image to the left the Marathon Plus pattern is shown

INCH	ETRTO	PATTERN	COLOUR	ARTICLE NO.
12 1/2 x 2 1/4	62-203	Street Runner	Grey	8900
16 x 1.75	45-305	Road Cruiser	Black	8924
16 x 2.125	57-305	Block	Silver	8897
18 x 1 3/8	37-390	Line	Grey	8929
20 x 1.75	47-406	Block	Black	8906
22 x 1.0	37-489	Marathon Plus	Black	8923
22 x 1 3/8	37-501/489	Block	Grey	8907
24 x 1.0	25-540	Line	Grey	8935
24 x 1.0	25-540	Marathon Plus	Black	8912
24 x 1 3/8	37-540	Block	Grey	89101
24 x 1 3/8	37-540	Marathon Plus	Black	8910
24 x 1 3/8	37-540	Downtown	Black	89111
26 x 1 3/8	37-590	Marathon Plus	Black	8936
28 x 1 3/8 x 1 5/8	37-622	Marathon Plus	Black	8891



## SOLID TYRES | 5 TO 8 INCH



- Material: Polyurethane (PU)
- Hardness: Shore A 75

INCH	SIZE	PATTERN	COLOUR	ARTICLE NO.
5 x 1.0	125x25	Line	Grey	9056
6 x 1 1/4	150x30	Line	Grey	9055
7 x 1 1/4	175x25	Line	Grey	9061
7 x 1 3/4	175x45	Line	Grey	8950
8 x 1 1/4	200x30	Line	Grey	9052
8 x 2.0	200x50	Line	Grey	9050
8 x 2.0	200x50	Line	Black	90501

## SOLID TYRES | 12 INCH



- Material: Polyurethane (PU)
- On the image to the left, the M28 pattern is shown
- Hardness: Shore A 65

INCH	ETRTO	PATTERN	COLOUR	ARTICLE NO.
12 1/2 x 2 1/4	62-203	M28	Grey	9057
12 1/2 x 2 1/4	62-203	Line	Grey	9053
12 1/2 x 2 1/4	62-203	Line	Black	90531

## SOLID TYRES | 16 INCH



- Material: Polyurethane (PU)
- On the image to the left, the KDB pattern is shown
- The MTB pattern is a Mountainbike pattern specially designed for off-road

INCH	ETRTO	PATTERN	RIMFIT	COLOUR	ARTICLE NO.
16 x 1.75	47-305	KDB	23-25mm	Grey	9125
16 x 1.75	47-305	KDB	27mm	Grey	91251
16 x 1.90	47-305	MTB	25mm	Black	9092

## SOLID TYRES | 20 INCH



- Material: Polyurethane (PU)
- On the image to the left, the ECO RX pattern is shown

INCH	ETRTO	PATTERN	RIMFIT	COLOUR	ARTICLE NO.
20 x 1 3/8	37-452	ECO RX	21mm	Grey	9121
20 x 1.75	47-406	Block	21mm	Black	9108

## SOLID TYRES | 22 INCH



- On the image to the left, the WC pattern is shown

INCH	ETRTO	PATTERN	RIMFIT	COLOUR	ARTICLE NO.
22 x 1.0	37-489	WC	19-21mm	Grey	9093
22 x 1 3/8	37-489	WC	19mm	Grey	8679
22 x 1 3/8	37-501	WC	19mm	Grey	86791
22 x 1 3/8	37-489	ECO RX	21mm	Grey	9034
22 x 1 3/8	37-501	KB	19-21mm	Grey	90701
22 x 1 3/8	37-489	ECO LN	21mm	Grey	9075
22 x 1 3/8	37-489	KB	18-20mm	Grey	9094

## SOLID TYRES | 24 INCH



- On the image to the left, the KLB is shown

INCH	ETRTO	PATTERN	RIMFIT	COLOUR	ARTICLE NO.
24 x 1.0	25-540	WC	19-21mm	Grey	9071
24 x 1 3/8	37-540	KLB	19-21mm	Grey	90601
24 x 1 3/8	37-540	Block	19-21mm	Grey	90604
24 x 1 3/8	37-540	WC	21mm	Grey	9068
24 x 1 3/8	37-540	ECO LN	21mm	Grey	9073
24 x 1 3/8	37-540	Snake	19-21mm	Grey	90731



SOLID TYRES | 26 INCH



- Material: Polyurethane (PU)
- From 20 inch and up, the tyres can be easily mounted with a tyre lever, see page 71

INCH	ETRTO	PATTERN	RIMFIT	COLOUR	ARTICLE NO.
26 x 1.0	25-590	Line	20-22mm	Grey	9035



SOLID TYRES | 28 INCH



- Material: Polyurethane (PU)
- From 20 inch and up, the tyres can be easily mounted with a tyre lever, see page 71

INCH	ETRTO	PATTERN	RIMFIT	COLOUR	ARTICLE NO.
28 x 1 5/8 x 1 3/8	37-622	Block	19mm	Black	9039



SOLID TYRES | 32 TO 34 INCH

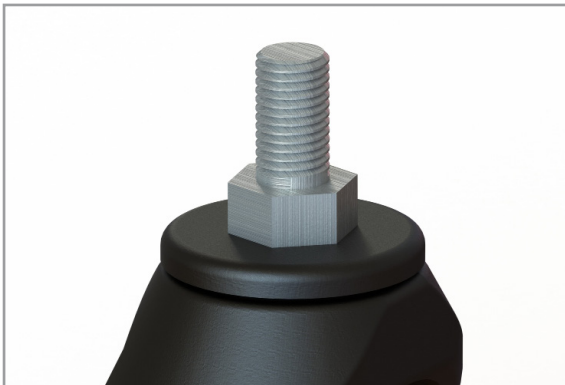


- Material: Polyurethane (PU)
- Tyres from 32 to 34 inch are mainly used for standing tables

INCH	ETRTO	PATTERN	RIMFIT	COLOUR	ARTICLE NO.
32 x 1.0	25-790	Line	21mm	Grey	9100
34 x 1.0	25-870	Line	21mm	Grey	9101



## SWIVEL FORK | 5 TO 8 INCH



- Integrated ball bearings
- Including dust cap

WHEEL SIZE	HUB LENGTH	FIXATION	TYPE	ARTICLE NO.
150x30	40mm	12mm	Standard	9204
150x30	40mm	M14	Standard	92041
200x30	45mm	12mm	Standard	92042
200x30	45mm	M14	Standard	92092
200x50	60mm	12mm	Standard	9209
200x50	60mm	M14	Standard	92091
200x50	60mm	12mm	Direction block	9202

## SWIVEL FORK | ATTACHMENTS



- Image: from left to right. 9499, 954551, 8548, 9212 en 92083

DESCRIPTION	TYPE	ARTICLE NO.
Adaptor without bearing	Blank steel	92083
Adaptor with bearing	Aluminum	8548
Bolt for fork	M14x22 / M10x12	9499
Dustcap	Plastic	9212
Wheel mounting bolt	M8 x 70	95455
Wheel mounting nut	M8	954551
Ball bearing	6201 RS	8780
Cover cap for unused mounting points	8mm hexagon	7052



## RIMS | 6 INCH



- For wheels 125x25 and 150x30
- Bearing: Ball bearing type 6000 2RS
- Aluminum bushing

SIZE	HUB LENGTH	AXLE HOLE	ARTICLE NO.
6 Inch	36mm	8mm	9005
6 Inch	45mm	8mm	90051

## RIMS | 8 INCH



- 8992 and 89921 are suitable for wheels 175x25 and 200x30
- 8997 is suitable for wheels van 175x45 and 200x50
- Bearing: Ball bearing type 6000 RS
- Aluminum bushing

SIZE	HUB LENGTH	AXLE HOLE	ARTICLE NO.
8 Inch	44mm	8mm	8992
8 Inch	60mm	8mm	89921
8 Inch	60mm	8mm	8997

## RIMS | 12 INCH



- For wheels 12 1/2 x 2 1/4 inch
- Bearing: Ball bearing type 62012RS
- Aluminum bushing

SIZE	VERSION	HUB LENGTH	AXLE HOLE	ARTICLE NO.
12 Inch	5 spoke	48mm	12mm	9004
12 Inch	Hollow spoke	38mm	12mm	9018
12 Inch	Drumbrake	38mm	12mm	8999



## RIMS | 16 INCH



- For wheels 16x1.75 and 16x1.90
- Bearing: Ball bearing type 62012RS
- Aluminum bushing

SIZE	VERSION	HUB LENGTH	AXLE HOLE	ARTICLE NO.
16 Inch	Plastic	55mm	12mm	9017

## RIMS | 20 TO 22 INCH



- Aluminum spoked rim
- Aluminum pushrim
- Bearing: Ball bearing type 62012RS
- Aluminum bushing

SIZE	HUB LENGTH	AXLE HOLE	ARTICLE NO.
20 Inch	53mm	12mm	88532
22 Inch	53mm	12mm	88531

## RIMS | 24 INCH



- Aluminum spoked rim
- Aluminum pushrim
- Bearing: Ball bearing type 62012RS
- Aluminum bushing

SIZE	VERSION	HUB LENGTH	AXLE HOLE	ARTICLE NO.
24 Inch	Standard	53mm	12mm	8853
24 Inch	Drumbrake	53mm	12mm	88534



SPACERS | WITH COLLAR



- Material: Aluminum
- Outer diameter: 12mm / Inner diameter: 8mm

DESCRIPTION	HEIGHT	ARTICLE NO.
Spacer / Distance bushing with collar	2mm	8725
Spacer / Distance bushing with collar	4mm	8724
Spacer / Distance bushing with collar	6mm	8723
Spacer / Distance bushing with collar	8mm	8722
Spacer / Distance bushing with collar	10mm	8721
Spacer / Distance bushing with collar	12mm	8720

SPACERS | WITHOUT COLLAR



DESCRIPTION	HEIGHT	DIAMETER	ARTICLE NO.
Spacer / Distance bushing without collar	2mm	8mm	8710
Spacer / Distance bushing without collar	4mm	8mm	8712
Spacer / Distance bushing without collar	6mm	8mm	8714
Spacer / Distance bushing without collar	8mm	8mm	8716
Spacer / Distance bushing without collar	10mm	8mm	8718
Spacer / Distance bushing without collar	12mm	8mm	8728
Spacer / Distance bushing without collar	14mm	8mm	8709
Spacer / Distance bushing	17,40mm	10mm	8726
Spacer / Distance bushing	25mm	10mm	8727

SPACERS | ASSORTMENT BOX



- 7 different sizes
- 200 distance bushings per box
- Sizes from 2mm to 14mm

DESCRIPTION	TYPE	ARTICLE NO.
Assortment box	with collar	8729
Assortment box	without collar	8730

## PUSHRIM COVERS | 20 TO 26 INCH



- Gives extra grip to the pushrim, moving the wheelchair can be done with less strength
- Fixed to your wheel in seconds
- Material: Silicone

DESCRIPTION	COLOUR	ARTICLE NO.
Pushrim cover 20 inch	Black	3896
Pushrim cover 22 inch	Black	3897
Pushrim cover 24 inch	Black	3898
Pushrim cover 24 inch	Red	38981
Pushrim cover 26 inch	Black	38982

## RIMTAPE | 16 TO 24 INCH



- With opening for the valve
- Material: Elastic rubber

DESCRIPTION	TYPE	ARTICLE NO.
Rimtape 16 - 20 inch	15mm	4601
Rimtape 22 - 24 inch	14mm	4603
Rimtape 26 - 28 inch	11mm	4602
Rimtape self-adhesive on roll 50m	15mm	4604

## TYRE LEVER | PLASTIC



- For fitting pneumatic and solid tyres to the rim
- Strengthened with a metal inner plate

DESCRIPTION	ARTICLE NO.
Tyre lever	8946



## VALVE ADAPTOR | VARIOUS



- From car valve to bicycle valve and vice versa
- Integrated setback

DESCRIPTION	ARTICLE NO.
Valve adaptor from AV to DV	8887
Valve adaptor AV 90 degree	88870

## SPOKES | PER GROSS (144 PCS)



DESCRIPTION	LENGTH	ARTICLE NO.
Spokes 13 grams	280mm	3988
Spokes 14 grams	190mm	3999
Spokes 14 grams	207mm	3998
Spokes 14 grams	228mm	3997
Spokes 14 grams	245mm	3996
Spokes 14 grams	250mm	3995
Spokes 14 grams	255mm	3994
Spokes 14 grams	270mm	3993
Spokes 14 grams	275mm	3992
Spokes 14 grams	280mm	3991

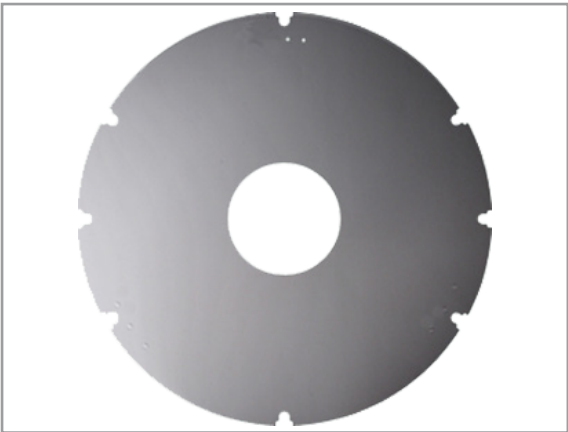
## SPOKE NIPPLE | PER GROSS (144 PCS)



- Per gross (144 pcs)
- 13 grams (for standard wheelchairs) and 14 grams (for sport wheelchairs)

DESCRIPTION	SPOKE TYPE	ARTICLE NO.
Spoke nipple	13 grams	39901
Spoke nipple	14 grams	3990

SPOKE GUARD | TRANSPARENT



- Transparent plastic

DESCRIPTION	ARTICLE NO.
Spoke guard transparent (a pcs)	7025

SPOKE GUARD | PRINTED

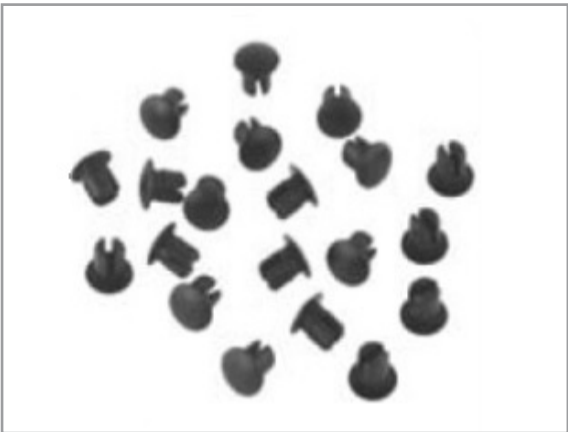


- Your own design, image or logo can be printed on the spoke guards
- All sizes
- Thickness: 1.50mm Polycarbonate
- You can also choose 1 of many examples on our website
- Minimum requirements for image:

More than 700 kb  
At least 1600x1600 pixels  
At least 150dpi

DESCRIPTION	ARTICLE NO.
Spoke guard printed (per set)	1000

SPOKE GUARD | FIXATION



- Mounts the spoke guard onto the wheel
- For all standard spoked wheels

DESCRIPTION	ARTICLE NO.
Spoke guard mounting	7024



QUICK RELEASE | AXLES

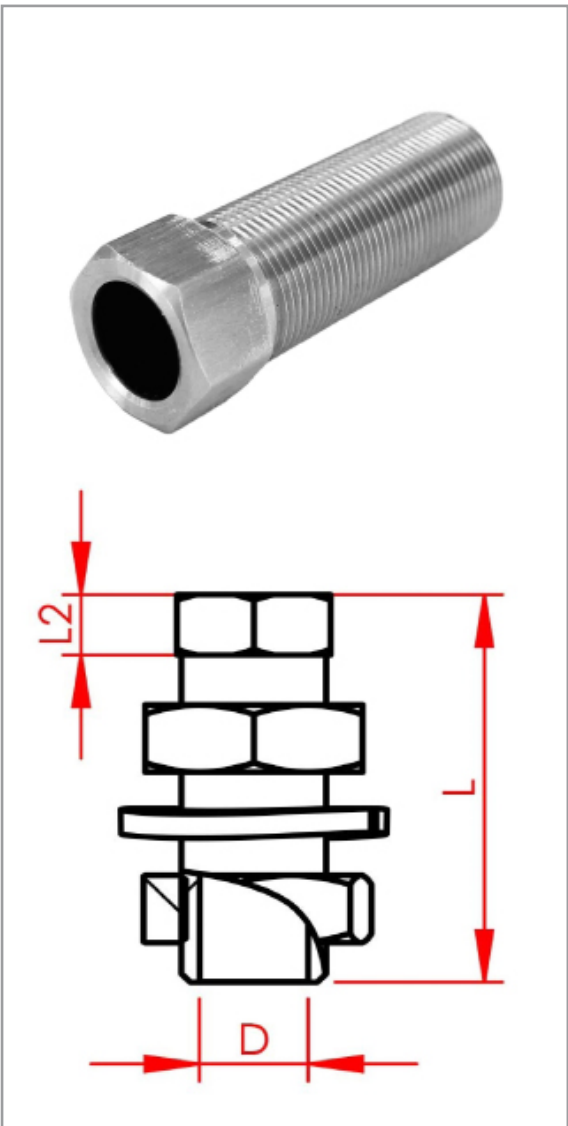


- Push the button to unlock the wheel
- Tempered steel

THICKNESS (MM)	LENGTH (MM)	ARTICLE NO.
12	98	9556
12	104	9553
12	112	8498
12	123	4014
12,70	98	9548
12,70	104	9559



QUICK RELEASE | ADAPTORS

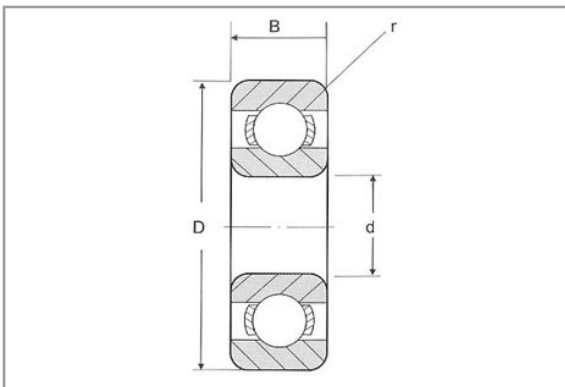


- Guides the quick release axle through the frame
- Tempered steel
- Fine thread

TOTAL LENGTH (L)	AXLE HOLE (D)	HEXAGON (L2)	ARTICLE NO.
45	12	7	85531
49	12	10	8553
50	12	10	9560
57	12	6,50	85532
63	12	7	85533
69	12	10	85534
71,50	12	8	85535
84	12	6	85536

DESCRIPTION	IMPLEMENTATION	ARTICLE NO.
Adaptor nut	M16 x 1.0	95613
Adaptor spring washer	16,20mm	95614

## BALL BEARINGS | TYPE 2RS



### BALL BEARINGS

All our wheels are provided with ball bearings

- Description of the seal: 2RS = seal with rubber (see image on the left)
- 2RS is used when the bearing need to be waterproof

TYPE	SEALING	d (mm)	D (mm)	B (mm)	ARTICLE NO.
R6	2RS	9,50	22,23	7,14	94343
R8	2RS	12,70	25,58	8	4206
608	2RS	8	22	7	9433
6000	2RS	10	26	8	9434
6002	2RS	15	32	9	9213
6004	2RS	20	42	12	94342
6005	2RS	25	47	12	94341
6201	2RS	12	32	10	8780
6201	S 2RS (SS)	12	32	10	4205

## BALL BEARINGS | TYPE ZZ



### BALL BEARINGS

All our wheels are provided with ball bearings

- Description of the seal: ZZ = seal with steel caps (see image on the left)
- ZZ is used with high speeds and temperatures

TYPE	SEALING	d (mm)	D (mm)	B (mm)	ARTICLE NO.
SR8	ZZ	12,70	28,60	8	94344
608	ZZ	8	22	7	5564
626	ZZ	6	19	6	94346
6000	ZZ	10	26	8	9435
6800	ZZ	10	19	5	94345
16100	ZZ	10	28	8	94347



HANDGRIP | ERGONOMIC



- Material: PVC
- Order per set

DESCRIPTION	DIAMETER	LENGTH	ARTICLE NO.
Handgrip ergonomic	22mm	120mm	7202

HANDGRIP | ERGONOMIC DELUXE



- Softgrip ergonomic handgrip
- Order per set

DESCRIPTION	DIAMETER	LENGTH	ARTICLE NO.
Handgrip ergonomic	22mm	120mm	7208

HANDGRIP | FLEXGRIP



- Material: TPE45
- Order per set

DESCRIPTION	DIAMETER	LENGTH	ARTICLE NO.
Handgrip flexgrip	22mm	115mm	7207



## HANDGRIP | ANATOMIC



- Material: PVC
- Order per set

DESCRIPTION	DIAMETER	LENGTH	ARTICLE NO.
Handgrip anatomic	22mm	125mm	7213

## HANDGRIP | FOAM



- Soft foam handgrips in different dimensions
- Order per piece (except 7203)

DESCRIPTION	DIAMETER	LENGTH	ARTICLE NO.
Soft foam handgrip	22mm	125mm	7203 (set)
Soft foam handgrip	22mm	400mm	7205
Soft foam handgrip	18mm	660mm	72062
Soft foam handgrip	20mm	660mm	72063
Soft foam handgrip	22mm	660mm	7206

## HANDGRIP | ERGO2



- Material: PVC
- Order per piece

DESCRIPTION	DIAMETER	LENGTH	ARTICLE NO.
Handgrip ergo2	22mm	120mm	7201

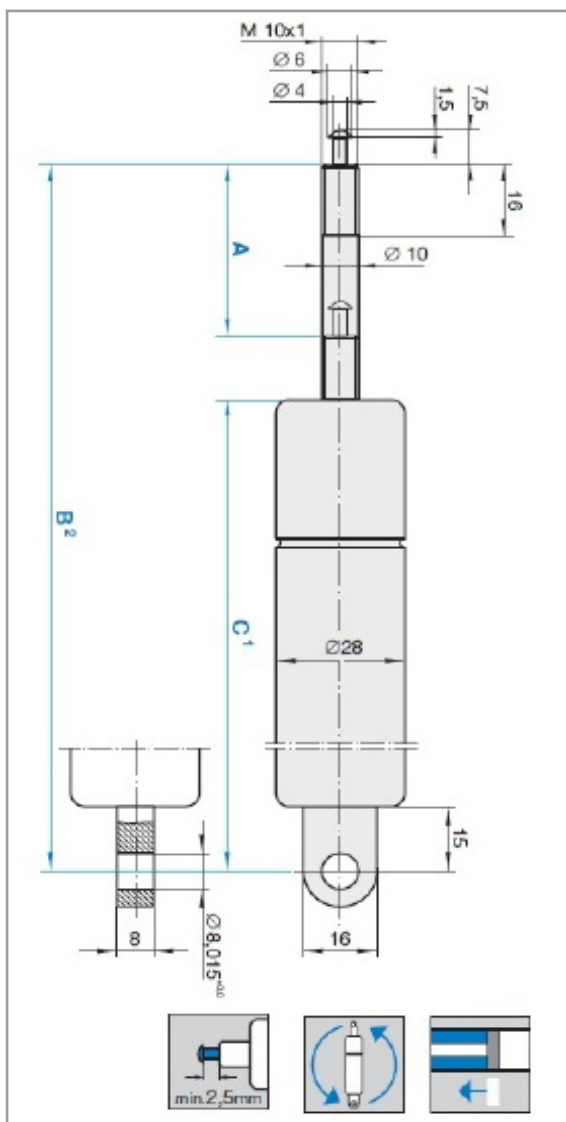
## GAS SPRINGS | SPECIFICATIONS



## RIGID BLOCKED GAS SPRINGS IN PUSH DIRECTION

- Linear spring characteristics for even force distribution throughout the whole movement
- Gas springs have a stepless adjustment and are used for the tilt function of our wheelchairs
- Suitable for position independent installation
- The gas springs are rigid blocked, the gas springs must be operated with an unlocker and will not spring from itself
- Control units can be found on the next page

## GAS SPRINGS | RIGID BLOCKED



- The following overview shows the standard range of gas springs
- It is possible to order gas springs in diviant sizes, please contact us to discuss your wishes

NEWTON	TOTAL LENGTH	HOUSING	STROKE	ARTICLE NO.
100	370	255	100	83173
100	430	315	100	83172
200	310	210	80	8358
200	430	315	100	8346
400	325	255	80	8318
400	370	255	100	831731
400	265	185	60	8307
500	445	300	125	8304
600	310	210	80	8303
800	265	185	60	8319
800	325	225	80	8320

## GAS SPRING CONTROL UNIT | ALUMINUM



- For cable operation, see page 48 and 49 for cables
- Aluminum housing

DESCRIPTION	TYPE	ARTICLE NO.
Control unit	Complete	8331
Housing, black	Standard	83312
Lever	Cable controlled	83314
Lever	Hand controlled	8337
Plate	Including M5 adjusting bolt	83313
Cable adjusting nipple	7x15mm	9423

## GAS SPRING CONTROL UNIT | STANDARD



- For cable operation, see page 48 and 49 for cables
- Cast iron housing

DESCRIPTION	TYPE	ARTICLE NO.
Control unit, with lever	Complete	83316
Cable adjusting bolt	M5x24mm	9422
Cable adjusting nipple	5x7mm	94231
Cable guide	Brass	9429

## GAS SPRING CONTROL UNIT | DELUXE



- For cable operation, see page 48 and 49 for cables
- Extra handle built-in, easy to operate

DESCRIPTION	TYPE	ARTICLE NO.
Control unit, with lever	Complete	83317
Cable guide	Plastic	94291
Cable adjusting nipple	5x7mm	94231



## GAS SPRING CONTROL | HYDRAULIC



- The hydraulic system works on oil pressure
- Install the push button inside the therapy table or armrest for a neat finish
- Including 1000mm cable
- Including fasteners to install the push button

DESCRIPTION	TYPE	ARTICLE NO.
Control unit	Hydraulic	833112

## GAS SPRING CONTROL | BOWDEN



- The bowden system works on a wire release system
- Install the push button inside the therapy table or armrest for a neat finish
- Including 1000mm or 1300mm cable
- Including control unit deluxe (83317)
- Including fasteners to install the push button

DESCRIPTION	TYPE	ARTICLE NO.
Control unit bowden	1000mm cable	833113
Control unit bowden	1300mm cable	833114

## GAS SPRING CONTROL | LEVER



- For the operation of cable controlled gas springs
- 22mm tube assembly
- Including cable adjusting bolt

DESCRIPTION	ARTICLE NO.
Brake lever short version	83371
Cable adjusting bolt M5x24	9422

## CABLE GUIDE | BRASS



- For the standard control unit, article number 83316 and the Stabilus control units

DESCRIPTION	TYPE	ARTICLE NO.
Cable guide	Brass	9429

## CABLE GUIDE | PLASTIC



- For the deluxe control unit, article number 83317

DESCRIPTION	TYPE	ARTICLE NO.
Cable guide	Plastic	94291

## GAS SPRING CONTROL | SPARE PARTS

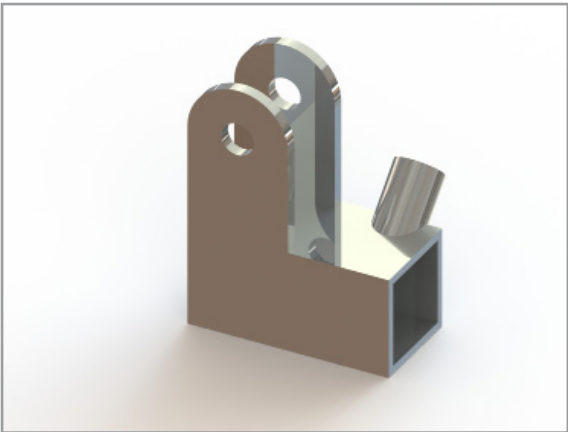


- Parts for the aluminium control unit, article number 8331

DESCRIPTION	TYPE	ARTICLE NO.
Lever incl. cap	Hand operated	8337
Lever	Cable operated	83314
Housing	Standard	83312
Housing	Holes on 1 side	83315
Plate	Including M5 adjusting bolt	83313



FIXATION PART | TYPE 210

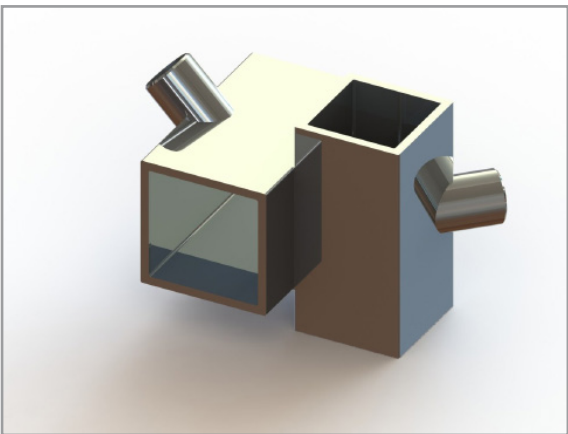


- Dimensions are taken from the outside of the tube
- 8mm fixation point
- Distance between the strips: 20mm
- On the image the left version is shown

DESCRIPTION	TYPE	VERSION	DIMENSIONS	ARTICLE NO.
Fixation part	210	Left	25x25mm	9709
Fixation part	210	Right	25x25mm	9441



FIXATION PART | TYPE 212

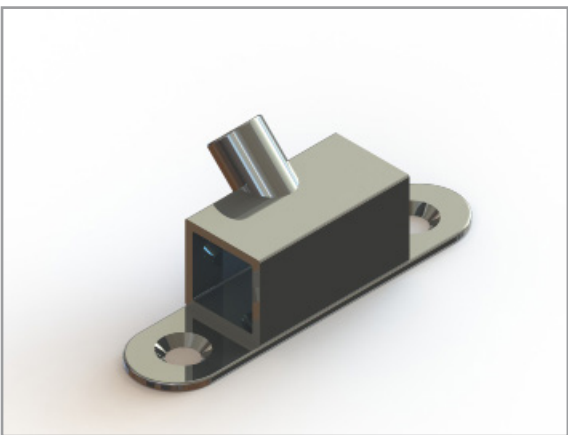


- Dimensions are taken from the outside of the tube
- M8 welding nut
- Chrome finish

DESCRIPTION	TYPE	LENGTH	DIMENSIONS	ARTICLE NO.
Fixation part	212 B	60-30mm	20x20mm	9710
Fixation part	212 C	50-50mm	25x25mm	9711



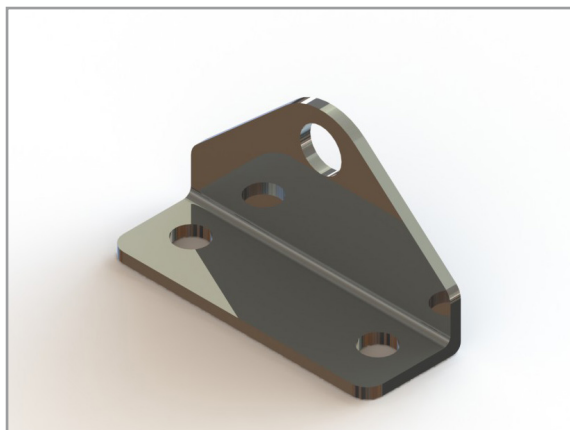
FIXATION PART | TYPE 310A



- Dimensions are taken from the outside of the tube
- 6mm fixation points
- 60mm hole distance
- Holes are countersunk on 1 side

DESCRIPTION	TYPE	LENGTH	DIMENSIONS	ARTICLE NO.
Fixation part	310A	40-85mm	20x20mm	9770

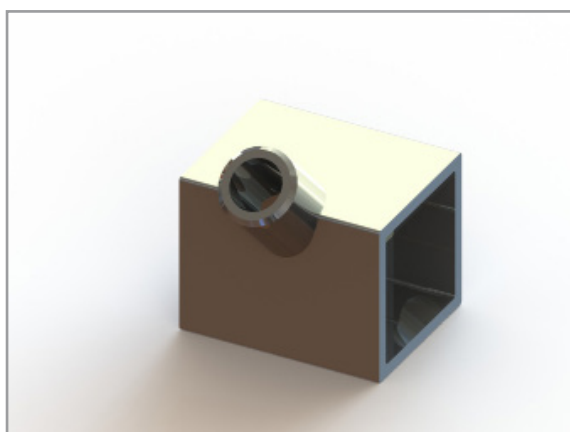
## FIXATION PART | TYPE 880



- Spare part of headrests 8327 and 83274
- 1x 8mm and 2x 6mm fixation points
- 35mm hole distance

DESCRIPTION	TYPE	FINISH	DIMENSIONS	ARTICLE NO.
Fixation plate	880	Chrome	50x32mm	9715
Fixation plate	880	Black	50x32mm	97151

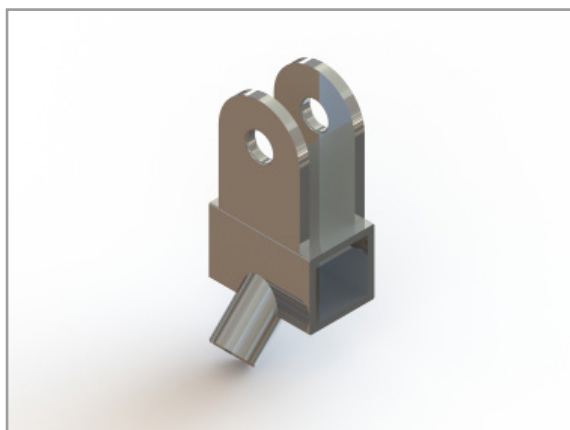
## FIXATION PART | TYPE 882



- Dimensions are taken from the outside of the tube
- Chrome finish

DESCRIPTION	TYPE	LENGTH	DIMENSIONS	ARTICLE NO.
Fixation part	882 A	32mm	15x15mm	9717
Fixation part	882 B	25mm	20x20mm	9718
Fixation part	882 C	25mm	25x25mm	9719
Fixation part	882 D	25mm	30x30mm	9720

## FIXATION PART | TYPE 884



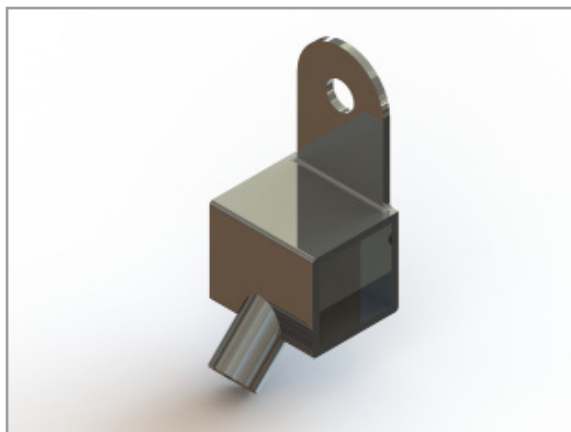
- Dimensions are taken from the outside of the tube
- Chrome finish

DESCRIPTION	TYPE	LENGTH	DIMENSIONS	ARTICLE NO.
Fixation part	884 B	30mm	20x20mm	9758
Fixation part	884 C	30mm	25x25mm	9722
Fixation part	884 D	30mm	30x30mm	9799





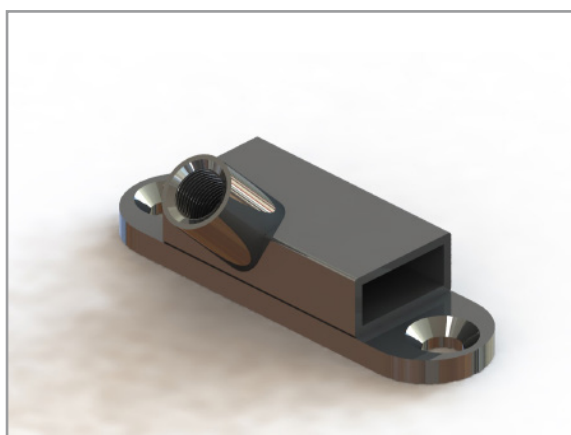
## FIXATION PART | TYPE 885



- Dimensions are taken from the outside of the tube

DESCRIPTION	TYPE	FINISH	DIMENSIONS	ARTICLE NO.
Fixation part	885 A	Chrome	15x15mm	9723
Fixation part	885 B	Chrome	20x20mm	9724
Fixation part	885 B	Black	20x20mm	97241
Fixation part	885 C	Chrome	25x25mm	9725
Fixation part	885 D	Chrome	30x30mm	9726

## FIXATION PART | TYPE 886



- Dimensions are taken from the outside of the tube
- 6mm fixation points
- 56.50mm hole distance
- Holes are countersunk on 1 side

DESCRIPTION	TYPE	LENGTH	DIMENSIONS	ARTICLE NO.
Fixation part	886	40-70mm	20x10mm	9701

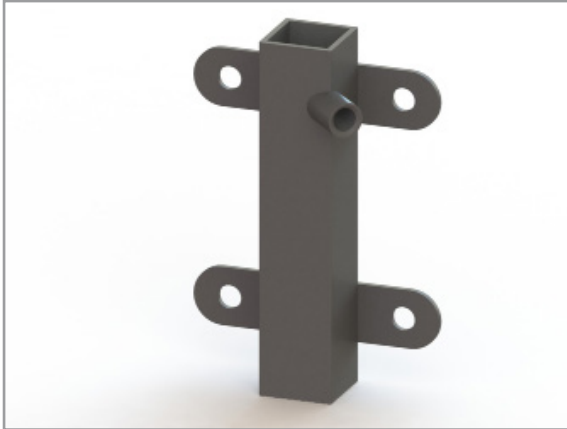
## FIXATION PART | TYPE 887



- 60mm slotted hole length
- 3mm thickness

DESCRIPTION	TYPE	FIXATION	ARTICLE NO.
Half moon strip	887	2x 8mm	9727
Half moon strip	887	1x 8mm 1x slotted hole	9698

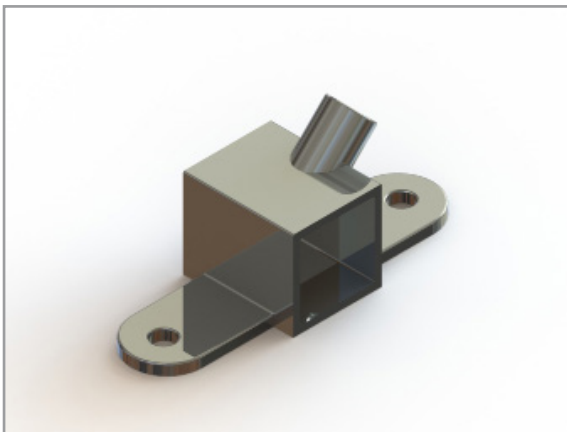
## FIXATION PART | TYPE 890



- Dimensions are taken from the outside of the tube
- On the image the left version (article number 9748) is shown
- 6mm fixation points
- 60mm hole distance (horizontal)

DESCRIPTION	TYPE	LENGTH	DIMENSIONS	ARTICLE NO.
Fixation part	890 Left	121mm	25x25mm	9748
Fixation part	890 Right	121mm	25x25mm	9749

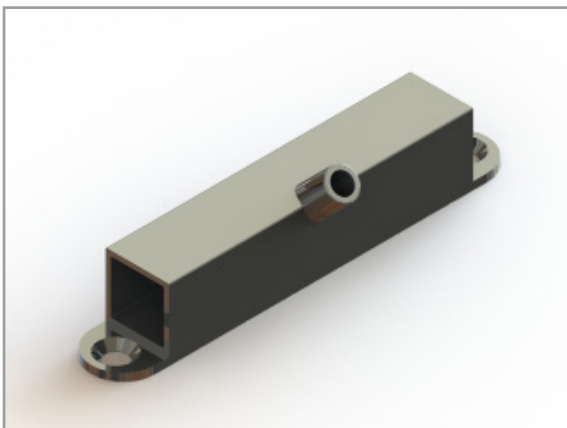
## FIXATION PART | TYPE 891



- Dimensions are taken from the outside of the tube

DESCRIPTION	TYPE	FINISH	DIMENSIONS	ARTICLE NO.
Fixation part	891 B	Chrome	20x20mm	9728
Fixation part	891 B	Black	20x20mm	97281
Fixation part	891 C	Chrome	25x25mm	9750
Fixation part	891 D	Chrome	30x30mm	9729

## FIXATION PART | TYPE 904

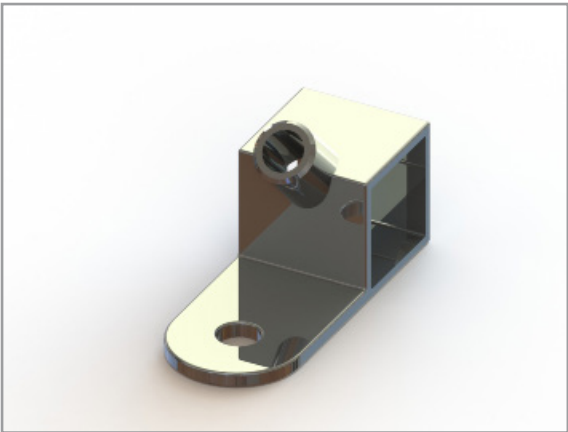


- Dimensions are taken from the outside of the tube
- 8mm fixation points
- 3mm plate thickness
- Holes are countersunk on 1 side

DESCRIPTION	TYPE	LENGTH	DIMENSIONS	ARTICLE NO.
Fixation part	904	120-156mm	25x25mm	9751



FIXATION PART | TYPE 1006



- Dimensions are taken from the outside of the tube

DESCRIPTION	TYPE	FINISH	DIMENSIONS	ARTICLE NO.
Fixation part	1006 B	Chrome	20x20mm	9737
Fixation part	1006 B	Black	20x20mm	97371
Fixation part	1006 C	Chrome	25x25mm	9738
Fixation part	1006 D	Chrome	30x30mm	83931
Fixation part	1006 D	Black	30x30mm	8393



90 DEGREE ANGLE | TYPE 200



- Dimensions are taken from the outside of the tube
- Chrome finish

DESCRIPTION	TYPE	LENGTH	DIMENSIONS	ARTICLE NO.
90 Degree angle	200	215x320mm	15x15mm	9753
90 Degree angle	200	250x450mm	15x15mm	9756



90 DEGREE ANGLE | TYPE 202



- Chrome finish

DESCRIPTION	TYPE	LENGTH	DIMENSIONS	ARTICLE NO.
90 Degree angle	202	250x200mm	6x20mm	9702

## 90 DEGREE ANGLE | TYPE 206



- Chrome finish

DESCRIPTION	TYPE	LENGTH	DIMENSIONS	ARTICLE NO.
90 Degree angle	206	250x300mm	6x15mm	9706
90 Degree angle	206	250x500mm	6x15mm	9705

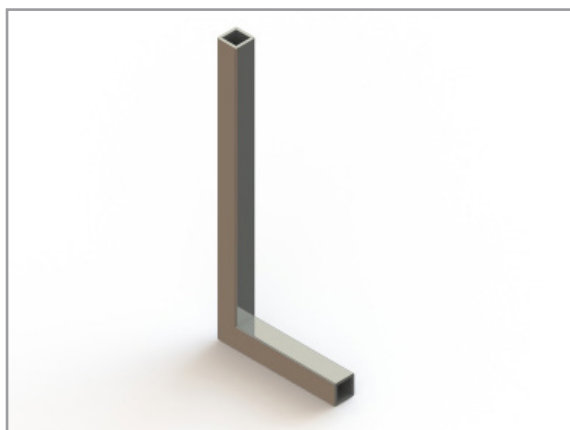
## 90 DEGREE ANGLE | TYPE 896



- Dimensions are taken from the outside of the tube
- Chrome finish

DESCRIPTION	TYPE	LENGTH	DIMENSIONS	ARTICLE NO.
90 Degree angle	896	250x350mm	20x20mm	9695
90 Degree angle	896	250x500mm	20x20mm	9735

## 90 DEGREE ANGLE | ABDUCTION

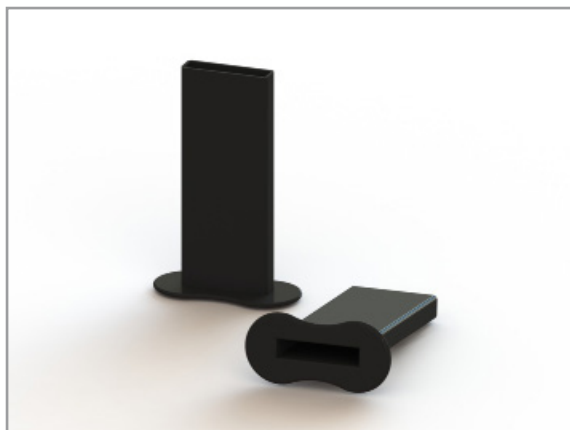


- Dimensions are taken from the outside of the tube
- Chrome finish

DESCRIPTION	TYPE	LENGTH	DIMENSIONS	ARTICLE NO.
90 Degree angle	Abduction	200x90mm	15x15mm	9319



## MATTRESS TRANSIT SLEEVE | PLASTIC



- To guide belts through mattresses without damaging the mattress
- Nylon reinforced plastic, strong and durable
- Sizes are taken from the inside of the sleeve

DESCRIPTION	LENGTH	DIMENSIONS	ARTICLE NO.
Transit sleeve	152mm	56x13mm	8309

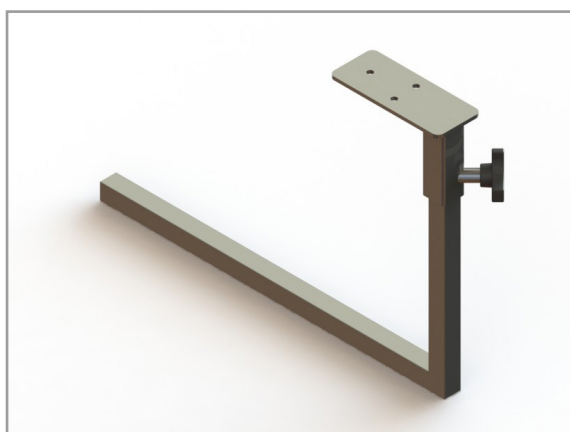
## MOUNTING TRIANGLE | DETACHABLE



- The cassette is made of teflon and the frame is steel
- The cassette is provided with fixation points to attach the seating system
- Disconnect the cassette from the frame with an index bolt

DESCRIPTION	TYPE	ARTICLE NO.
Mounting triangle	Complete system	8518
Mounting triangle	Cassette	8519
Mounting triangle	Frame	85181

## ABDUCTION SYSTEM | DETACHABLE



- Height adjustable
- 5mm fixation points

DESCRIPTION	TYPE	ARTICLE NO.
Abduction system	Complete system	8536
90 Degree angle	215x320mm	9753
Abductor holder	40x100mm 60mm high	8540
Starknob	M8x20	83381

## INDEX BOLTS | STANDARD



- Galvanized steel
- With and without latch (block)
- 31mm total length

DESCRIPTION	DIMENSIONS	LATCH	SHAFT	ARTICLE NO.
Index bolt / snapper	M10x1.0	Yes	6mm	9759
Index bolt / snapper	M10x1.0	No	6mm	97591
Index bolt / snapper	M12x1.75	Yes	7mm	9892

## INDEX BOLTS | SS



- Stainless steel

DESCRIPTION	DIMENSIONS	LATCH	SHAFT	ARTICLE NO.
Index bolt / snapper	M10x1.0	Yes	5mm	9775
Index bolt / snapper	M10x1.0	No	5mm	97751
Index bolt / snapper	M12x1.50	Yes	6mm	98912
Index bolt / snapper	M12x1.50	No	6mm	9891
Index bolt / snapper	M12x1.50	No	8mm	98911
Index bolt / snapper	M16x1.50	Yes	8mm	98913

## BALL JOINT | WINDING SHAPED

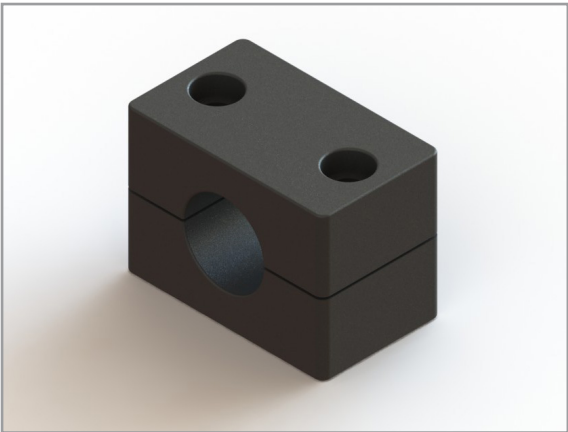


- Galvanized steel
- 31mm total length

DESCRIPTION	DIMENSIONS	DIN	ARTICLE NO.
Ball joint	M8x30	71802	3970



TUBE CLAMP | MOUNTING CLAMP

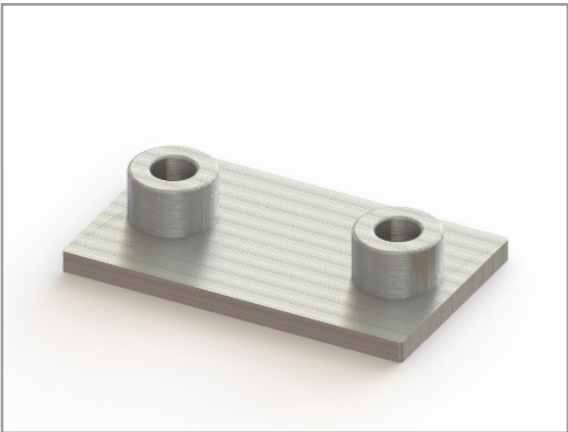


- Per set of 2pcs

DESCRIPTION	TYPE	DIAMETER	ARTICLE NO.
Tube clamp	Plastic	18mm	7099
Tube clamp	Plastic	20mm	7098
Tube clamp	Plastic	22mm	7101
Tube clamp	Plastic	25mm	7103
Tube clamp	Aluminum	25mm	71031
Tube clamp	Plastic	32mm	7104



TUBE CLAMP | WELDING PLATE

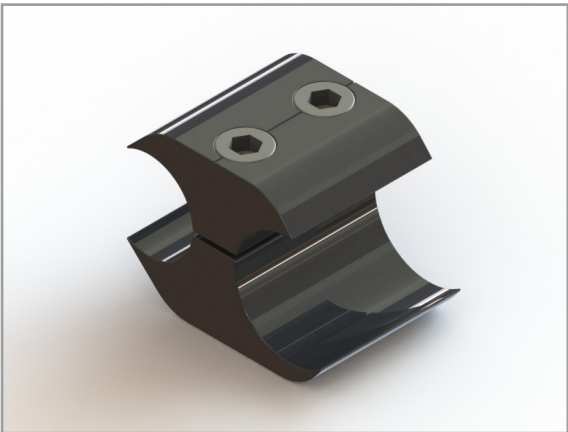


- Dimensions: 50x30x3mm

DESCRIPTION	FIXATION	DIAMETER	ARTICLE NO.
Welding plate	2x M6	22 to 25mm	70971



TUBE CLAMP | ALUMINUM



- To mount a hand brake to the wheelchair frame
- Adjustable with 2 bolts

DESCRIPTION	TYPE	DIAMETER	ARTICLE NO.
Tube clamp	Aluminum	19-22mm	8554
Tube clamp	Aluminum	19-25mm	4020



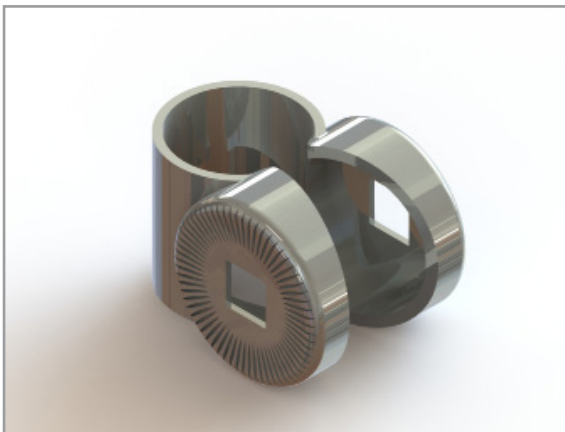
## TUBE CLAMP | ADJUSTING SYSTEM



- Used for mounting the seating or backsupport on the wheelchair frame
- Pivotal strip with slot attachment

DESCRIPTION	TYPE	DIAMETER	ARTICLE NO.
Adjusting system	Pivotable	22mm	59563
Adjusting system	Pivotable	25mm	595631

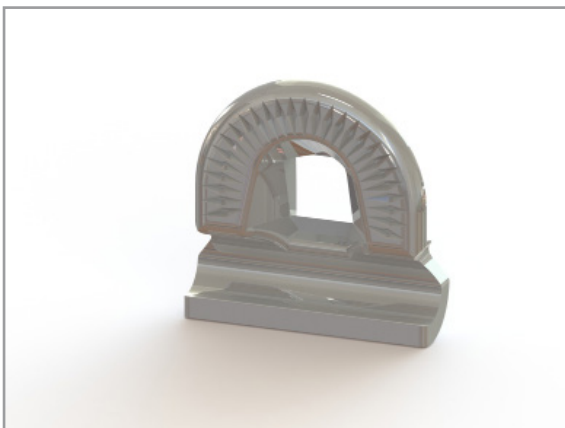
## SADDLE CLAMP | SELLE ROYAL



- 8mm fixation points

DESCRIPTION	TYPE	DIAMETER	ARTICLE NO.
Saddle clamp	Square hole	20mm	9427
Saddle clamp	Round hole	20mm	9428

## SADDLE CLAMP | SIDE PLATE

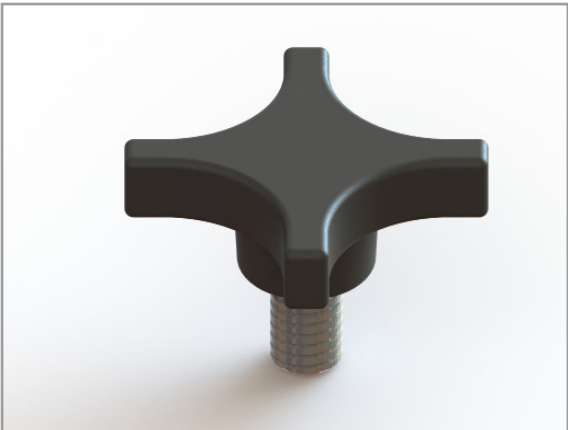


- To fixate the saddle clamp to a saddle

DESCRIPTION	TYPE	DIAMETER	ARTICLE NO.
Side plate	a pcs	20mm	94271



KNOB | STARKNOB

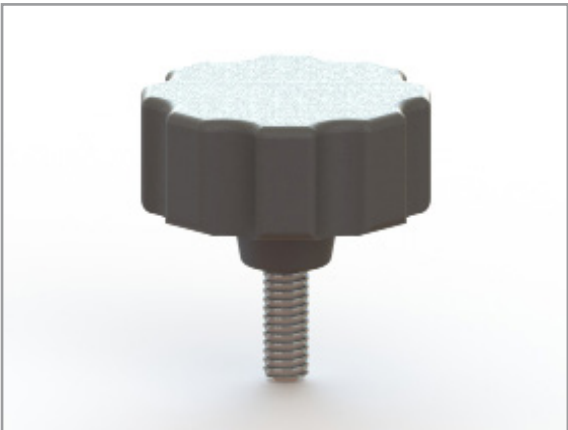


- For many applications
- Compact knob
- Soft to moderate fixation

DESCRIPTION	TYPE	ARTICLE NO.
Starknob	M8x16mm	8338
Starknob	M8x20mm	83381
Starknob	M8x25mm	8349



KNOB | STANDARD

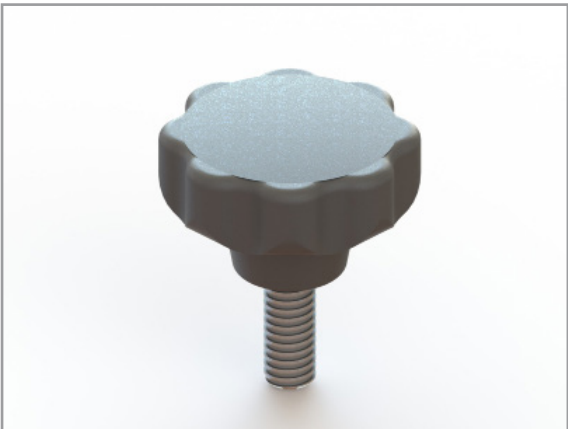


- For many applications
- Ergonomic knob
- Medium to strong fixation

DESCRIPTION	TYPE	ARTICLE NO.
Knob	M8 internal	8342
Knob	M6x20	8339
Knob	M8x20	8348



KNOB | WITH LOGO



- With your own logo and colour
- Dimensions: height: 25mm diameter: 40mm

DESCRIPTION	TYPE	ARTICLE NO.
Knob with logo	M8 internal	83471
Knob with logo	M6 internal	83472
Knob with logo	M6x20mm	83473
Knob with logo	M8x20mm	8347
Knob with logo	M8x25mm	83474
Knob with logo	M8x30mm	83475

## KNOB | WING KNOB



- Soft to moderate fixation

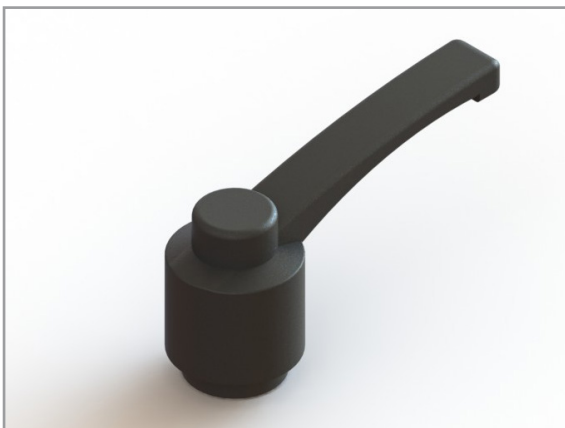
DESCRIPTION	TYPE	ARTICLE NO.
Wing knob	M5x10mm	9543
Wing knob	M6x10mm	95431

## CLAMPING HANDLE | EXTERNAL THREAD



DESCRIPTION	TYPE	ARTICLE NO.
Clamping handle	M5x25mm	9539
Clamping handle	M6x25mm	95411
Clamping handle	M6x30mm	9526
Clamping handle	M8x20mm	9550
Clamping handle	M8x25mm	9551
Clamping handle	M8x30mm	9549
Clamping handle	M8x40mm	9524

## CLAMPING HANDLE | INTERNAL THREAD



- 95651 is specially for rollators and is including M8x35mm bolt for mounting on the rollator frame

DESCRIPTION	TYPE	ARTICLE NO.
Clamping handle	M6 internal	9540
Clamping handle	M8 internal	9565
Clamping handle rollator	M8 internal	95651



TUBE CAP | SQUARE



- Sizes are taken from the outside of the tube

DESCRIPTION	DIMENSIONS	ARTICLE NO.
Tube cap square	10x10mm	92067
Tube cap square	15x15mm	9206
Tube cap square	20x20mm	9207
Tube cap square	25x25mm	9225
Tube cap square	30x30mm	9226



TUBE CAP | ROUND



DESCRIPTION	DIMENSIONS	ARTICLE NO.
Tube cap round	12mm	92069
Tube cap round	13mm	92070
Tube cap round	15mm	92064
Tube cap round	18mm	92068
Tube cap round	19mm	9217
Tube cap round	22mm	92065
Tube cap round	25mm	92063
Tube cap round	32mm	9222
Tube cap round	36mm	9223



TUBE CAP | RECTANGLE



- Sizes are taken from the outside of the tube

DESCRIPTION	DIMENSIONS	ARTICLE NO.
Tube cap rectangle	30x15mm	92061
Tube cap rectangle	40x20mm	92071

## TUBE CAP | OVAL



Sizes are taken from the outside of the tube

DESCRIPTION	DIMENSIONS	ARTICLE NO.
Tube cap oval	40x20mm	92062
Tube cap oval	50x20mm	9218

## TUBE CAP | NUT CAP



- Mount with hand or plastic hammer onto a bolt or nut

DESCRIPTION	DIMENSIONS	ARTICLE NO.
Nut cap	M6	6503
Nut cap	M8	6504
Nut cap	M10	6505
Nut cap	M12	92066
Nut cap	M12 flat	9205

## TUBE CAP | TIPPING CAP



- Mount with a plastic hammer onto a tube

DESCRIPTION	DIMENSIONS	ARTICLE NO.
Tipping cap	22mm	92073
Tipping cap	25mm	92072



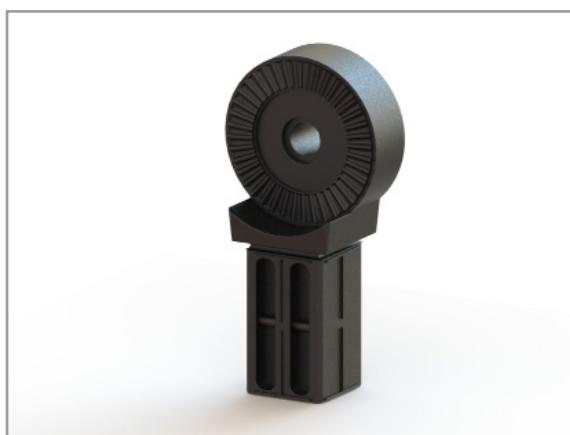
## HEIGHT ADJUSTER | LOCKABLE



- Fix to the tube with a rivet or M5 bolt
- By pressing the button, the desired angle can be selected.
- By releasing the button the adjuster automatically locked

DESCRIPTION	DIAMETER	MATERIAL	ARTICLE NO.
Height adjuster	22mm	Plastic	8218

## HINGE | PLASTIC



- Tight fit inside the tube
- For many purposes, such as armrests and legrests
- Per set

DESCRIPTION	DIAMETER	MATERIAL	ARTICLE NO.
Hinge	25x25mm	Plastic	9214

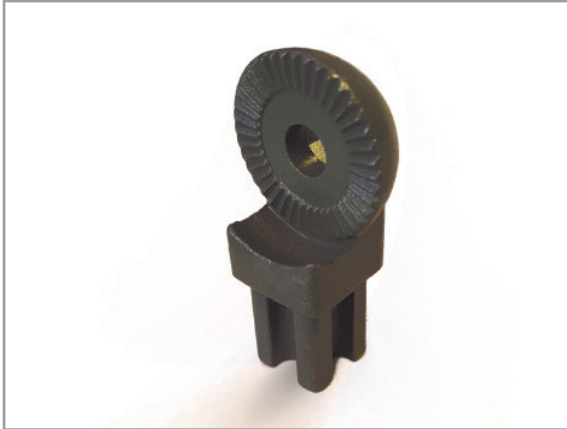
## HINGE | HORIZONTAL TEETH



- Material: Plain steel
- Should be welded onto a tube
- Per piece

DESCRIPTION	DIAMETER	MATERIAL	ARTICLE NO.
Hinge	20x20mm	Plain steel	0950

## HINGE | 20X20MM



- Material: Plain steel
- Should be welded onto a tube
- Per piece

DESCRIPTION	DIAMETER	MATERIAL	ARTICLE NO.
Hinge	20x20mm	Plain steel	0951

## HINGE | 25X25MM



- Material: Plain steel
- Should be welded onto a tube
- Per piece

DESCRIPTION	DIAMETER	MATERIAL	ARTICLE NO.
Hinge	25x25mm	Plain steel	0952

## HINGE | ROUND TUBE



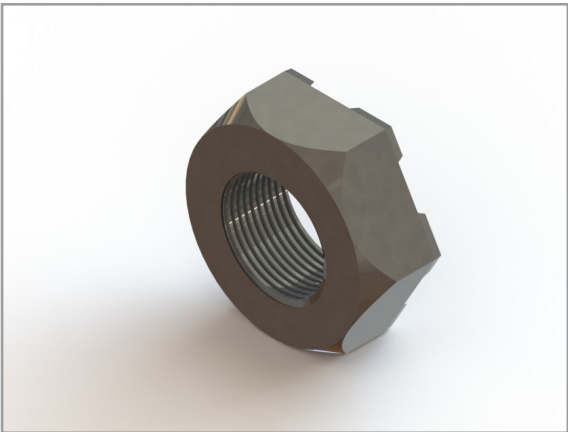
- Material: Plain steel
- Should be welded onto a tube
- Per piece

DESCRIPTION	DIAMETER	MATERIAL	ARTICLE NO.
Hinge	19-22mm	Plain steel	0953





WELD NUT | DIN 928

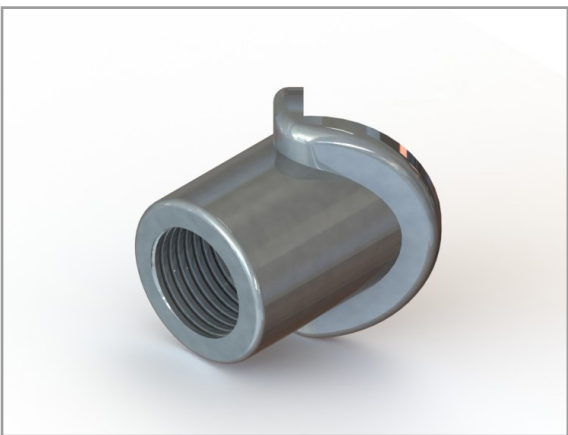


- Metric thread
- Plain steel or stainless steel

DESCRIPTION	TYPE	MATERIAL	ARTICLE NO.
Welding nut DIN 928	M5	SS	98961
Welding nut DIN 928	M6	SS	9896
Welding nut DIN 928	M6	Plain steel	9898
Welding nut DIN 928	M8	SS	9895
Welding nut DIN 928	M8	Plain steel	9897



CORNER WELDING NUT | WITH COLLAR

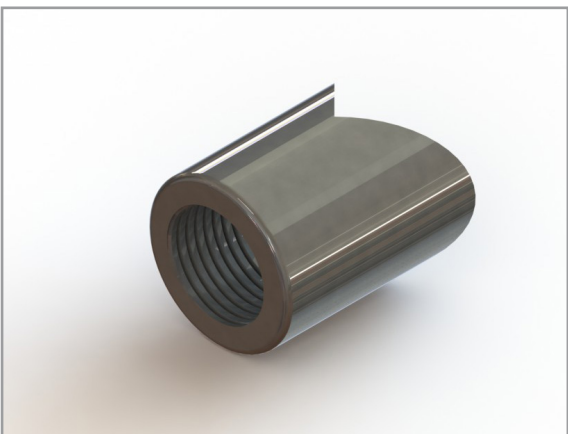


- Flange/collar for a bigger welding range without damaging the thread

DESCRIPTION	TYPE	MATERIAL	ARTICLE NO.
Corner welding nut	M8	Plain steel	9754



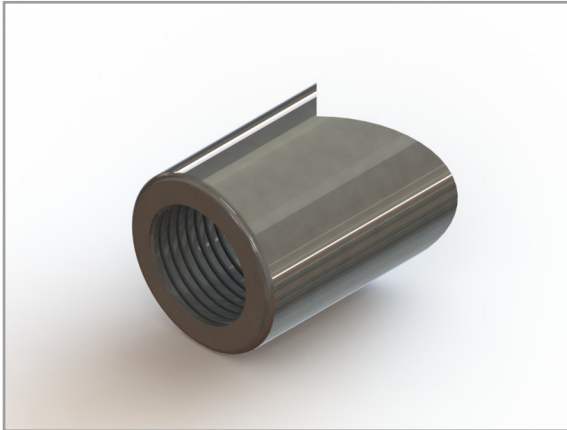
CORNER WELDING NUT | WITH THREAD



- Metric thread
- Plain steel or stainless steel

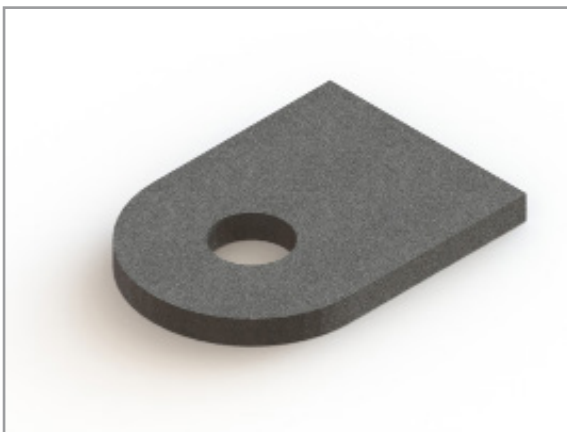
DESCRIPTION	TYPE	MATERIAL	ARTICLE NO.
Corner welding nut	M8	SS	9894
Corner welding nut	M8	Plain steel	9755
Corner welding nut	M10	SS	975531
Corner welding nut	M10	Plain steel	975532
Corner welding nut	M12	Plain steel	975541

## CORNER WELDING NUT | WITHOUT THREAD



DESCRIPTION	TYPE	MATERIAL	ARTICLE NO.
Corner welding nut	M5	SS	975511
Corner welding nut	M5	Plain steel	97551
Corner welding nut	M6	SS	97552
Corner welding nut	M6	Plain steel	975521
Corner welding nut	M8	Plain steel	97556
Corner welding nut	M10	Plain steel	97553
Corner welding nut	M12	Plain steel	97554
Corner welding nut	M16	Plain steel	97555

## WELDING PLATE | 8MM



- 8mm fixation point
- 3mm thickness

DESCRIPTION	TYPE	DIMENSIONS	ARTICLE NO.
Welding plate	Plain steel	35x25mm	9699
Welding plate	SS	35x25mm	96991

## DRIVE-IN NUT | ZINC PLATED



- Can be put inside a pre-drilled hole
- Material: galvanized steel

DESCRIPTION	TYPE	LENGTH	ARTICLE NO.
Drive-in nut	M5	8mm	8784
Drive-in nut	M6	12mm	8785
Drive-in nut	M8	15mm	87851



SEAT BELT | COMPLETE



- 10mm fixation points
- Steel locking mechanism
- Adjustable in length

DESCRIPTION	LENGTH	WIDTH	ARTICLE NO.
Seat belt complete	1350mm	50mm	6302



SEAT BELT | STRAP



- Per roll of 25 meter
- Colour: black

DESCRIPTION	WIDTH	LENGTH	ARTICLE NO.
Seat belt	40mm	25 meter	63031
Seat belt	48mm	25 meter	6303



SEAT BELT | LOCK



- Steel safety locking mechanism
- Red release button

DESCRIPTION	WIDTH	ARTICLE NO.
Belt lock	40-45mm	6301
Belt lock	50mm	63011

## WALKING STICK | FOLDABLE



- Material: aluminum
- Ergonomic gel handle
- Length adjustable from 83 to 93cm

DESCRIPTION	COLOUR	LENGTH	ARTICLE NO.
Walking stick foldable	Red	83-93cm	10370RC
Walking stick foldable	Blue	83-93cm	10370BC

## WALKING STICK | UMBRELLA



- Walking stick and umbrella together
- Material: aluminum
- Rubber tipping cap
- Length adjustable from 77 to 93cm
- Including cover in matching colour

DESCRIPTION	COLOUR	LENGTH	ARTICLE NO.
Walking stick umbrella	Beige	77-93cm	10393BK-1
Walking stick umbrella	Silver	77-93cm	10393AK-1

## PEDAL TRAINER | CYCLE TRAINER



- Cycle training comfortably from the chair
- Suitable for arms and legs
- Total weight of just 2.2kg

DESCRIPTION	DIMENSIONS	FOLDED SIZE	ARTICLE NO.
Pedal trainer	44.50x43x26.50cm	27.50x43x17.50cm	10273KDR



CRUTCH CAP | SILVER



- Easy replacement without tools

DESCRIPTION	TYPE	MATERIAL	ARTICLE NO.
Crutch cap	16mm	Rubber	7048
Crutch cap	18mm	Rubber	7050
Crutch cap	19mm	Rubber	7049
Crutch cap	22mm	Rubber	7051
Crutch cap	25mm	Rubber	7053



CRUTCH CAP | BLACK



- Easy replacement without tools

DESCRIPTION	TYPE	MATERIAL	ARTICLE NO.
Crutch cap	16mm	Rubber	70481
Crutch cap	19mm	Rubber	70491
Crutch cap	22mm	Rubber	90511
Crutch cap	25mm	Rubber	70531



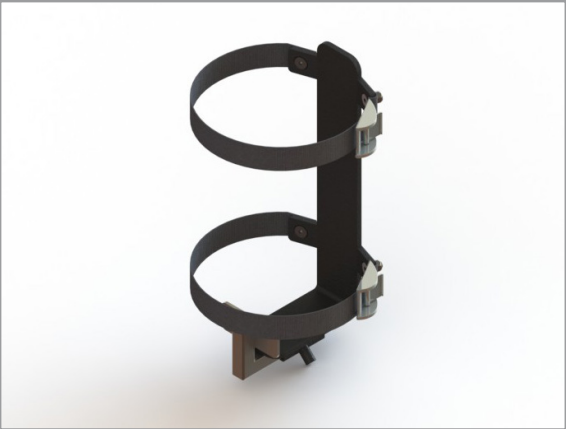
CRUTCH CAP | TRIPOD



- Specially designed for more stability
- Stands upright because of the wide foot

DESCRIPTION	TYPE	MATERIAL	ARTICLE NO.
Crutch cap	19mm	Rubber	10350HCTR

OXYGEN CYLINDER HOLDER | UNIVERSAL



- Fix the oxygen cylinder with 2 tension straps
- 15x15mm frame fitting

DESCRIPTION	TYPE	MATERIAL	ARTICLE NO.
Oxygen cylinder holder	Universal	Steel	60061

OXYGEN CYLINDER HOLDER | 107MM



- Including mounting plate and fasteners
- Fixation points: 41mm hole distance and 10mm diameter
- Round tube mounting is possible (see 7101, 7103 and 70971)
- For oxygen cylinders with a diameter till 107mm

DESCRIPTION	TYPE	MATERIAL	ARTICLE NO.
Oxygen cylinder holder	107mm	Steel	60055
Tube mounting	22mm	Plastic	7101
Tube mounting	25mm	Plastic	7103
Tube mounting fastener	Universal	Steel	70971

OXYGEN CYLINDER HOLDER | 119MM



- Including mounting plate and fasteners
- Fixation points: 41mm hole distance and 10mm diameter
- Round tube mounting is possible (see 7101, 7103 and 70971)
- For oxygen cylinders with a diameter till 119mm

DESCRIPTION	TYPE	MATERIAL	ARTICLE NO.
Oxygen cylinder holder	119mm	Steel	60056
Tube mounting	22mm	Plastic	7101
Tube mounting	25mm	Plastic	7103
Tube mounting fastener	Universal	Steel	70971



CRUTCH HOLDER | TOPRO



- For Troja models: Topro Troja and Topro Troja 2G
- Including fasteners

DESCRIPTION	TYPE	MATERIAL	ARTICLE NO.
Crutch holder Troja	Standard	Plastic	8546



CRUTCH HOLDER | SCOOTER ELITE



- For scooter type Elite
- Multiple fixation points on the mounting plate
- Space for 2 crutches

DESCRIPTION	TYPE	MATERIAL	ARTICLE NO.
Crutch holder	Elite	Steel	8545



CRUTCH HOLDER | SCOOTER STANDARD



- For multiple scooters
- Including 2 M6 bolts
- Space for 2 crutches

DESCRIPTION	TYPE	MATERIAL	ARTICLE NO.
Crutch holder	Standard	Steel	5006



CRUTCH HOLDER | TROPHY



- For scooter type Trophy
- Including mounting plate and fasteners
- Space for 2 crutches

DESCRIPTION	TYPE	MATERIAL	ARTICLE NO.
Crutch holder	Trophy	Steel	5026

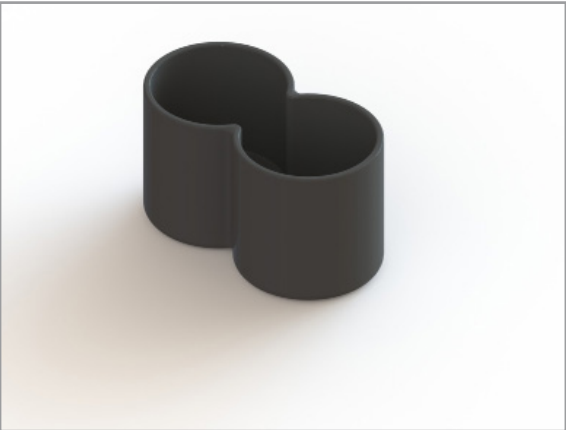
CRUTCH HOLDER | WHEELCHAIR



- For the most wheelchairs
- Horizontal and vertical tube positioning possible
- Space for 2 crutches
- Including fasteners

DESCRIPTION	DIAMETER	MATERIAL	ARTICLE NO.
Crutch holder	22-25mm	Plastic	900300310

CRUTCH HOLDER | DOUBLE

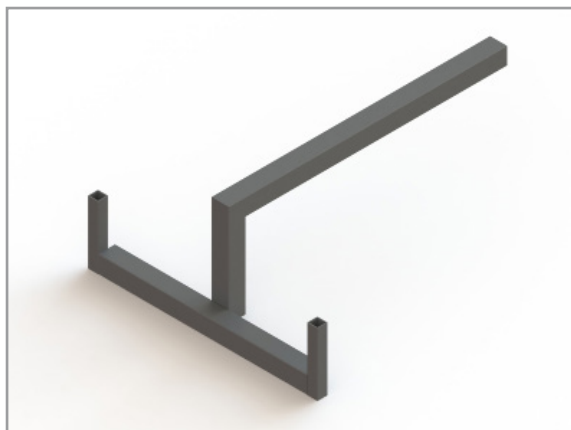


- Universal mounting
- 10 fixation points available
- Space for 2 crutches

DESCRIPTION	TYPE	MATERIAL	ARTICLE NO.
Crutch holder	Double basket	Plastic	8544



## ROLLATOR HOLDER | SEAT ASSEMBLY



- Through this rollator/crutch holder bracket, different holders can be mounted on your scooter
- For scooters with installation possibility underneath the seat

DESCRIPTION	DIAMETER	ARTICLE NO.
Rollator holder bracket	25x25mm	9611

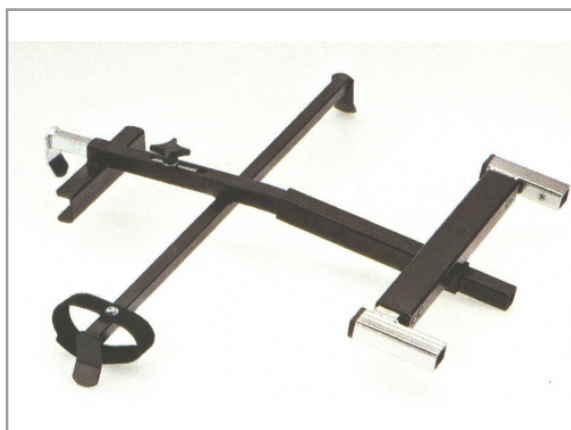
## ROLLATOR HOLDER | TOPRO TROJA



- For scooter mounting
- For width-folding rollators
- Also for Topro Troja and Sunrise Gemino

DESCRIPTION	TYPE	ARTICLE NO.
Rollator holder	Width-folding rollators	5007

## ROLLATOR HOLDER | UNIVERSAL



- For scooter mounting
- For all basic model rollators
- Height and width adjustable

DESCRIPTION	TYPE	ARTICLE NO.
Rollator holder	Basic rollators	9612

## WHEELCHAIR | CUSHION WITH ANTI-SLIP



DESCRIPTION	WIDTH	LENGTH	THICKNESS	ARTICLE NO.
Cushion	40cm	40cm	5cm	700134
Cushion	40cm	43cm	5cm	700122
Cushion	43cm	43cm	5cm	700120
Cushion	45cm	43cm	5cm	700136
Cushion	45cm	45cm	5cm	700110
Cushion	48cm	46cm	5cm	700132
Cushion	50cm	43cm	5cm	700118
Cushion	50cm	45cm	5cm	700114
Cushion	50cm	50cm	5cm	700116

## WHEELCHAIR | LEG BAG



- Covers the lower body up to the hip
- Protects against wind and cold
- With reflection line
- 2 clamps for mounting onto the wheelchair

DESCRIPTION	TYPE	MATERIAL	ARTICLE NO.
Leg bag	With reflection	Black	2000

## WHEELCHAIR | ANTI TIPPER



- Height adjustable
- Material: Plastic / Aluminum
- Including fasteners

DESCRIPTION	DIAMETER	WHEEL DIAMETER	ARTICLE NO.
Anti tippers	22-25mm	55mm	7021



## ROLLATOR | UMBRELLA



- Suitable for most wheelchairs and rollators
- 2 angle adjustment points
- Including fasteners

DESCRIPTION	COLOUR	DIAMETER	ARTICLE NO.
Umbrella	Blue	22-25mm	6300_B
Umbrella	Silver	22-25mm	6300_G
Umbrella	Black	22-25mm	6300_Z

## ROLLATOR | BACK SUPPORT



- Suitable for most brands and types like: Topro Troja, Sunrise Gemino, Uniroll Topas and all basic models
- Including fasteners
- Length adjustable

DESCRIPTION	TUBE TYPE	ARTICLE NO.
Back support for rollator	Oval	8547

## ROLLATOR | COVER



- To cover your rollator outside or in the garage
- Suitable for most rollators

DESCRIPTION	COLOUR	ARTICLE NO.
Rollator cover	Blue	710000083
Rollator cover	Silver	710000084

## SCOOTER | COVER



- To cover your scooter outside or in the garage
- Colour: silver

DESCRIPTION	TYPE	DIMENSIONS	ARTICLE NO.
Scooter cover	Standard	140x80x125cm	RT-2993
Scooter cover	Large	155x80x125cm	RT-4443
Scooter cover	XL	180x80x125cm	RT-4444

## SCOOTER | BAGS



- Waterproof
- Made of strong nylon material

DESCRIPTION	POSITIONING	ARTICLE NO.
Scooter bag	Steering column	RT-5025
Scooter bag	Back support	RT-5022

## SCOOTER | PONCHO



- Can be used on your scooter or wheelchair
- Protects against rain and wind

DESCRIPTION	COLOUR	ARTICLE NO.
Poncho / cape	Red	RT-SC004
Poncho / cape	Blue	RT-SC001



## RAMP | STANDARD



- Foldable ramp to get over stairs and thresholds
- Threshold height: 3 to 7cm
- Maximum load capacity: 350kg
- Including transport bag
- Build in handles
- Material: aluminum

DESCRIPTION	DIMENSIONS	WEIGHT	ARTICLE NO.
Standard ramp	76x40cm	3.30kg	STD51097

## RAMP | HEIGHT ADJUSTABLE



- Height adjustable between 4 and 7cm
- Maximum load capacity: 300kg

DESCRIPTION	DIMENSIONS	WEIGHT	ARTICLE NO.
Adjustable ramp	76x45x4-7cm	3.20kg	PAW04276

## RAMP | FOLDABLE



- Foldable portable 'easy travel' ramp
- Maximum load capacity: 300kg
- Material: aluminum
- Anti-slip coating

DESCRIPTION	DIMENSIONS	WEIGHT	ARTICLE NO.
Foldable ramp	45x71cm	4.10kg	BB1P04571



**I to 10**

90 degree tubes 87

**A**

Abduction system 88  
 Abductor 18  
 Amputation support 39  
 Anatomic handgrip 77  
 Anti tipping system 107  
 Anti tipping wheels 56  
 Armpads 34-36  
 Armrest holders 37-38  
 Armrest parts 36-37  
 Armrests 33

**B**

Backrests 17  
 Ball clamp 24  
 Ball joint 89  
 Ball bearing 75  
 Belts 100  
 Blunt support 39  
 Brake adjuster 52  
 Brake lever 47-48  
 Brake lever cap 52  
 Brake strap 52  
 Braking cable 48

**C**

Cable adjuster 49  
 Cable adjusting nipple 50  
 Cable clamp 51  
 Cable guider 81  
 Cable guider flexible 51  
 Cable nipple 50  
 Cable sleeve 50  
 Calfpad 44  
 Caps 95  
 Central legrest 40  
 Clamping handle 93  
 Comfort legrest 40  
 Corner welding nuts 98-99  
 Crutch basket 105  
 Crutch cap 102  
 Crutch holder 104-105  
 Cushions 107  
 Cycle trainer 101

**D**

Dego II 8  
 Distance bushing 70  
 Drumbrake 46  
 Dustcap for fork 67

**E**

Ergonomic handgrip 76  
 EV-50 19

**F**

Finishing profile 19  
 Fixation parts 82-86  
 Footplate 43  
 Footrest holder 41-42

**G**

Gas spring control 79-80  
 Gas spring control unit 81  
 Gas spring lever 80  
 Gas springs 78

**G**

Gemino back support 108

**H**

Handbrakes 45  
 Handgrips 76-77  
 Headrest adjustment 21-23  
 Headrest guide 26-27  
 Headrest holder 21-23  
 Headrests 20  
 Height adjuster 96  
 Hinges 96-97

**I**

Index bolts 89  
 Indoor wheelchairs 14-15  
 Inner cable 49

**K**

Kneepads 18  
 Knobs 92

**L**

Leg bag 107  
 Legrests 39  
 Lifty 12

**M**

Mattress transit sleeve 88  
 Metal hinge 96-97  
 Mounting clamp 90  
 Mounting triangle 88

**N**

Nivara 12  
 Nut caps 95

**O**

Oxygen cylinder holder 103

**P**

Pedal trainer 101  
 Plaster support 41  
 Plastic cap 94-95  
 Plastic hinge 96  
 Pneumatic tyres 63  
 Pneumatic wheels 53-55  
 Polyether 19  
 Poncho 109  
 Printed spoke guards 73  
 PU tyres 64-66  
 Pur Ester 19  
 Pushrim cover 71

**Q**

Quick release adaptors 74  
 Quick release axles 74

**R**

Ramps 110  
 Ridge for headrest 25  
 Rims 68-69  
 Rintape 71  
 Rollator backbelt 108  
 Rollator cover 108  
 Rollator umbrella 108  
 Rollator holder 106

**S**

Saddle clamps 91  
 Safety belt 100  
 Safety belt lock 100

**S**

Samsara 14  
 Scissor brakes 46  
 Scooter bags 109  
 Scooter cover 109  
 Scooter crutch holder 104  
 Scooter poncho 109  
 Seatings 16  
 Sidepillows 18  
 Skate wheels 56  
 Snappers 89  
 Solid tyres 64-66  
 Spacers 70  
 Spider 10  
 Spoke nipple 72  
 Spoke guard 73  
 Spoke guard fixation 73  
 Spokes 72  
 Stainless steel wheelchair 15  
 Starknobs 92  
 Stop for headrest 25  
 Swivel fork 67  
 Swivel fork bolt 67  
 Swivel fork parts 67  
 Swivel wheels 61

**T**

Teeth hinges 96-97  
 Therapy table holder 28  
 Therapy table reception 31-32  
 Therapy tables 29-30  
 Tipping cap 95  
 Transit shell 88  
 Troja back support 108  
 Troja crutch holder 104  
 Troja rollator holder 106  
 Trophy crutch holder 105  
 Tube caps 94-95  
 Tube clamp adjusting system 91  
 Tube clamp welding plate 90  
 Tube clamps 90  
 Tubes 62  
 Tyre lever 71

**U**

Umbrella 108  
 Upholstery 19

**V**

Valve adaptor 72  
 Varia 6

**W**

Walking sticks 101  
 Weft nut 99  
 Welding nut 98  
 Welding plate 99  
 Wheelchair crutch holder 105  
 Wheelchair legbag 107  
 Wheelchairs 6-13  
 Wheelchair frames 6-15  
 Wheels with pneumatic tyre 53-55  
 Wheels with rubber tyre 59-60  
 Wheels with solid tyre 56-58  
 Wingknob 93



***www.pegasuszorg.com***

Address        Kerketuinenweg 79  
                    2544 CZ The Hague  
                    The Netherlands

**Contact**

Tel.:            +31 (0) 70 388 1158  
Fax:             +31 (0) 70 388 2413

**Email**

General:       info@pegasuszorg.com  
Sales:          sales@pegasuszorg.com

**General information**

CoC:            3168390  
Vat no.:        NL811241713B01

 **Pegasus Zorg**  
Copyright Pegasus Zorg b.v.

